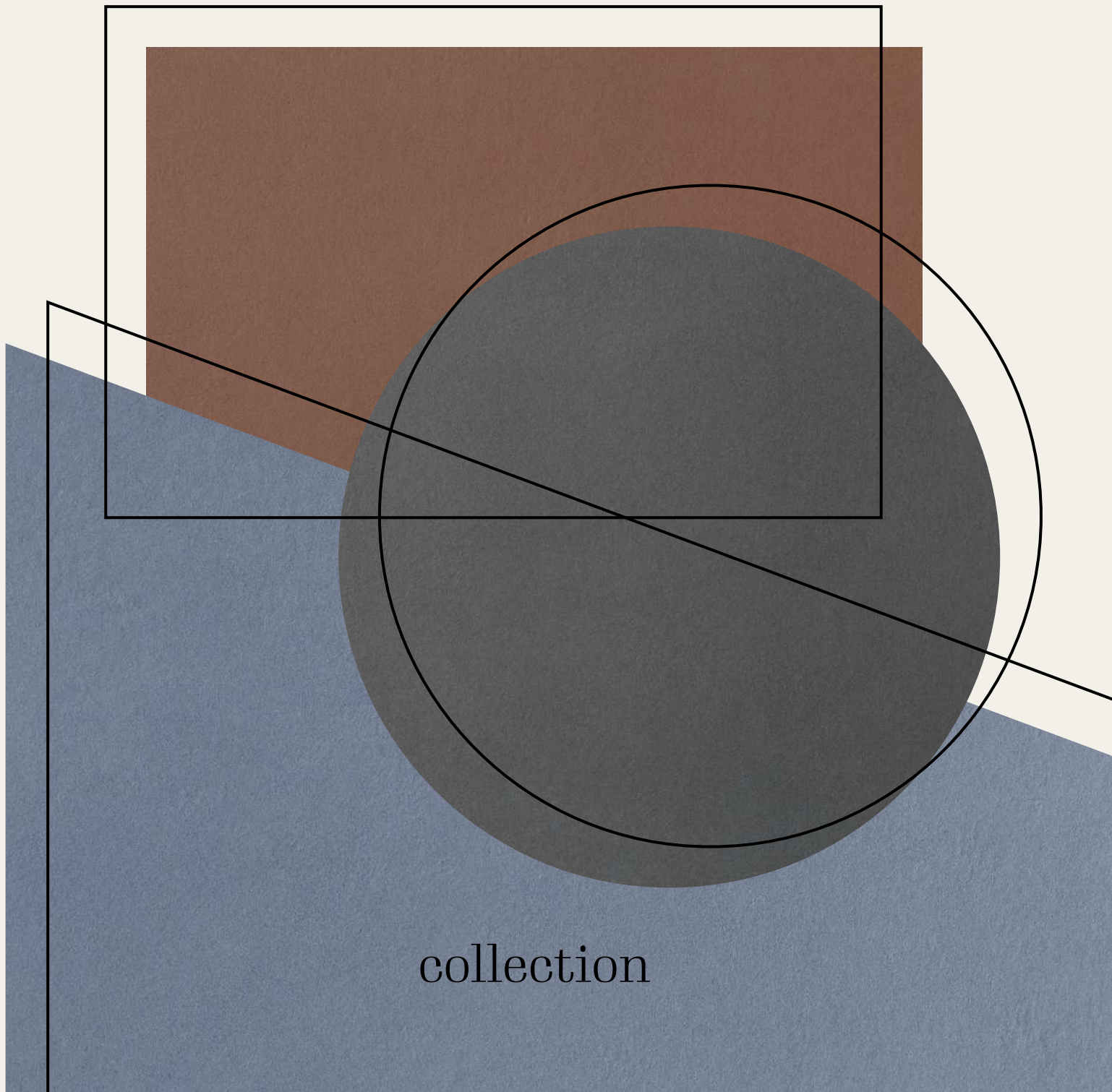


LOOM

BY ITALGRANITI



collection

<i>piano.70</i>	5
<i>piano.90</i>	9
<i>piano.140</i>	15
<i>piano.180</i>	19
<i>piano^{angle}.80</i>	27
<i>piano^{angle}.110</i>	31
<i>cilindro.50</i>	39
<i>piano^{low}.70</i>	47
<i>piano^{low}.90</i>	51
<i>piano^{low}.140</i>	55
<i>piano^{low}.180</i>	59
<i>technical</i>	65

DESIGN
ANDREA PARISIO
& GIUSEPPE PEZZANO

LOOM è il nuovo brand di Italgraniti dedicato a componenti di arredo e di design. LOOM come telaio, una serie di "fili", di elementi, di progetti, collegati tra loro in una trama unica, ma al contempo distinti e dotati di una propria e forte personalità. Con LOOM Italgraniti si lancia verso un futuro ancora da immaginare, da realizzare filo dopo filo, collezione dopo collezione, in cui le ceramiche da superfici si fanno oggetti, seguono linee squadrate o morbide, acquisiscono nuove funzionalità realizzando la propria estetica in arredi di uso quotidiano, ma sempre caratterizzati dall'eccellenza assoluta di materiali e da un design che ne esalta la matericità. Con perfetta sinergia tra gres porcellanato e ceramica, che combinano contemporaneamente prestazioni tecniche e funzionali, e in linea con la tradizione aziendale,

i componenti LOOM pensati per il bagno sono caratterizzati da forme essenziali, capaci di abbinarsi elegantemente con pavimenti e pareti. Come un tessuto nasce da una moltitudine di fili che si intrecciano tra loro, così la collezione bagno LOOM, i cui elementi sono personalizzabili con mosaici muretto e tutte le collezioni in 6 mm, è il primo passo pensato da Italgraniti per accordare tra loro funzionalità e estetica, semplicità e design, realizzando un progetto armonico di cui mobili e componenti di arredo sono, in perfetta sintonia con gli ambienti che li ospitano, gli assoluti protagonisti.

LOOM is Italgraniti's new brand dedicated to furniture and design components. LOOM, a series of 'threads', of elements, of projects, linked together in a single weave, but at the same time distinct and endowed with its own strong personality. With LOOM, Italgraniti launches itself into a future yet to be imagined, to be realised thread after thread, collection after collection, where ceramics from surfaces become objects, following square or soft lines, getting new functionalities and realising their own aesthetics in everyday furniture, but always characterised by the absolute excellence of materials and a design that enhances their materiality. With perfect synergy between porcelain stoneware and ceramics, combining technical

and functional performance at the same time, and in line with the company's tradition, LOOM components designed for the bathroom are featured by their essential shapes, capable of combining elegantly with floors and walls.

Just as a fabric is born from a multitude of threads that intertwine with each other, so the LOOM bathroom collection, whose elements can be customised with wall mosaics and all the 6-mm collections, is the first step taken by Italgraniti to bring together functionality and aesthetics, simplicity and design, creating a harmonious project in which furniture and furnishing components are the absolute protagonists in perfect harmony with the settings that house them.



piano .70

Un ambiente essenziale, che valorizza la curvatura del lavabo a sbalzo e il design del contenitore sospeso che lo sorregge, all'interno di una stanza in cui ogni elemento dialoga in maniera armonica con lo spazio intorno.

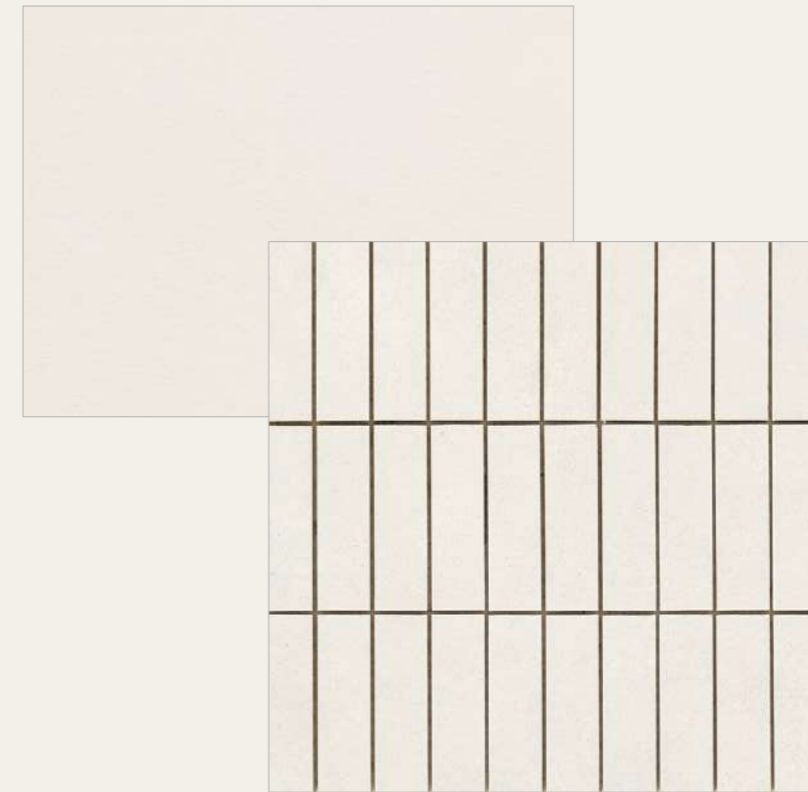
piano.70



LOOM

8

9



nuances bianco
nuances muretto bianco

An essential space, able to enhance the arching of the cantilevered basin and the design of the hanging cabinet that

sustains it, in a room where each element dialogues harmoniously with the surrounding space.



piano .90

Un lavandino a sbalzo poggiato su un contenitore sospeso con un cassettone rivestito in gres porcellanato. Il bianco dei neon, riflesso nello specchio, crea un rimando cromatico che mette in evidenza le linee del lavabo in ceramica che emerge tra le pareti listellate.



An on top basin placed on a hanging cabinet whose drawer is clad with porcelain stoneware. The white color of neon,

reflecting in the mirror, creates a chromatic reference which highlights the lines of the ceramic washbasin emerging from the striped walls.

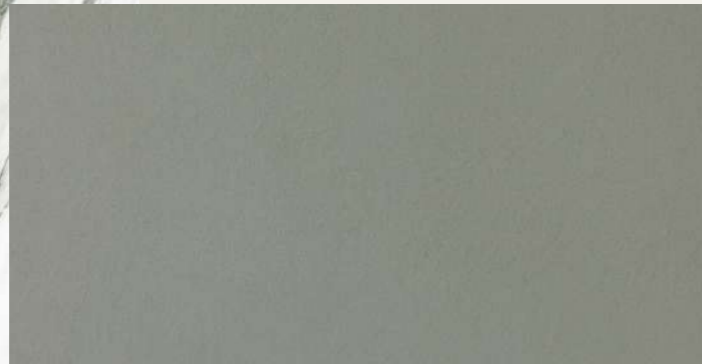






piano .140

Un bagno in gres porcellanato dalla rigorosa eleganza, in cui trova perfetta collocazione un lavandino tondo a sbalzo, poggiato su un contenitore il cui rivestimento sembra prender vita dalle venature effetto marmo delle pareti.



charm experience calacatta green
nuances salvia

An elegant porcelain stoneware bathroom, in which an round cantilevered washbasin is perfectly placed. The latter is

placed on cabinet whose cladding seems to come to life from the marble-effect veins of the walls.





piano .180

Un bagno ampio, in cui le pareti laterali effetto marmo si alternano a quella frontale in listellato. Sopra due lavandini a sbalzo poggiati su contenitori sospesi, personalizzabili nei rivestimenti, due specchi dal design contemporaneo contribuiscono a dare movimento alla stanza.





charm experience invisible grey
nuances listello tratto antracite
nuances fiamma
nuances antracite

A large bathroom. In which the marble-effect side wall alternate with the front striped one. Above two cantilevered basins resting on hanging cabinets, which

can be customized in terms of the claddings, there are two mirrors with a contemporary design which contribute in giving action to the room.



collection

LOOM

26

27

piano^{angle} .80

Un contenitore triangolare dalle ante asimmetriche regge un lavandino a sbalzo la cui essenzialità valorizza le cromie perfettamente coordinate del bagno, a cui le prospettive create dagli specchi conferiscono ulteriore profondità.





nuances grigio
nuances avorio

A triangular cabinet with asymmetric doors supports a cantilever basin whose essentiality enhances the perfectly

coordinated colors of the bathroom, to which the perspectives created by the mirrors give additional depth.



piano^{angle} *.110*

Un bagno dall'eleganza austera, in cui le pareti di gres porcellanato effetto marmo riflettono gli elementi della stanza e rimandano a un'idea di lusso classica, perfettamente controbilanciata dal design contemporaneo del lavandino e dal contenitore a tre ante.



nuances marrone
charm experience calacatta black
nuances nero

A bathroom with an austere elegance, in which the marble-effect porcelain stoneware walls reflect the elements of

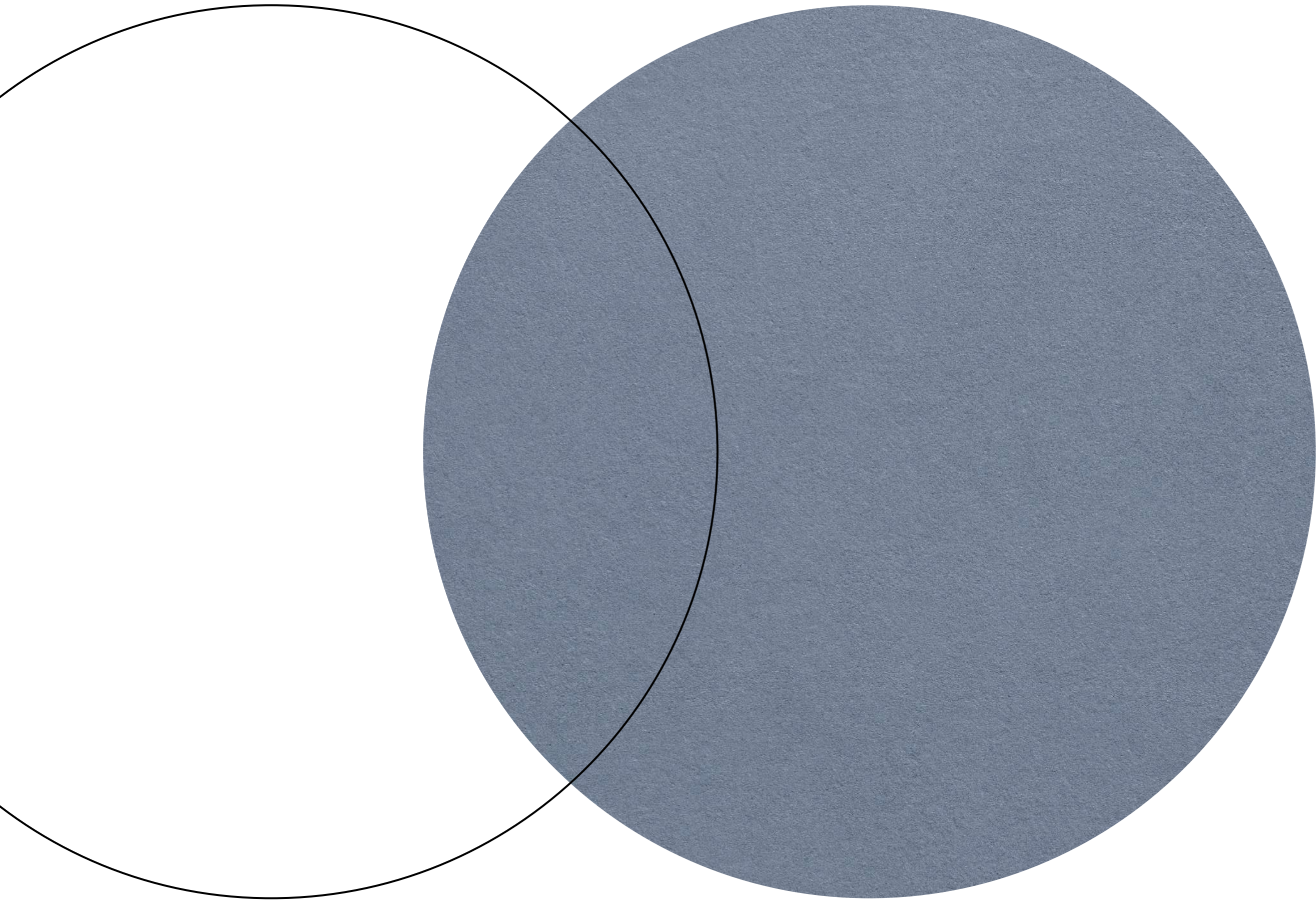
the room and recall an idea of classic luxury, perfectly balanced by the contemporary design of the washbasin and the three-door cabinet.





In questo ambiente i punti luce bianchi creano una perfetta simmetria tra le lampade che separano i due specchi dalle forme irregolari e i lavandini poggiati a sbalzo sugli elementi sospesi, le cui ante danno vita a una composizione unica.

In this space, the white light points create a perfect symmetry between the lamps that separate the two irregular shaped mirrors and cantilevered basins resting on the suspended cabinets, whose doors create a unique composition.



cilindro .50

Un lavabo freestanding,
personalizzato da un rivestimento
listellato che ne asseconda
la curvatura, crea una composizione
armonica con le linee dello specchio
e della lampada a sospensione,
in un bagno dal perfetto equilibrio.

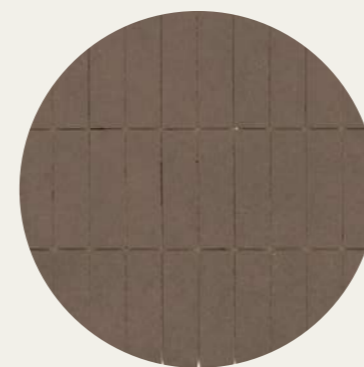




Tre lavandini autoportanti, rivestiti dalla stessa collezione listellata delle pareti, danno vita a un gioco di simmetrie in cui le basi tonde dei lavabi, che ne valorizzano la tridimensionalità, alleggeriscono la rigorosa squadratura degli specchi.



nuances muretto marrone
 nuances marrone
 nuances listello tratto cipria
 nuances cipria

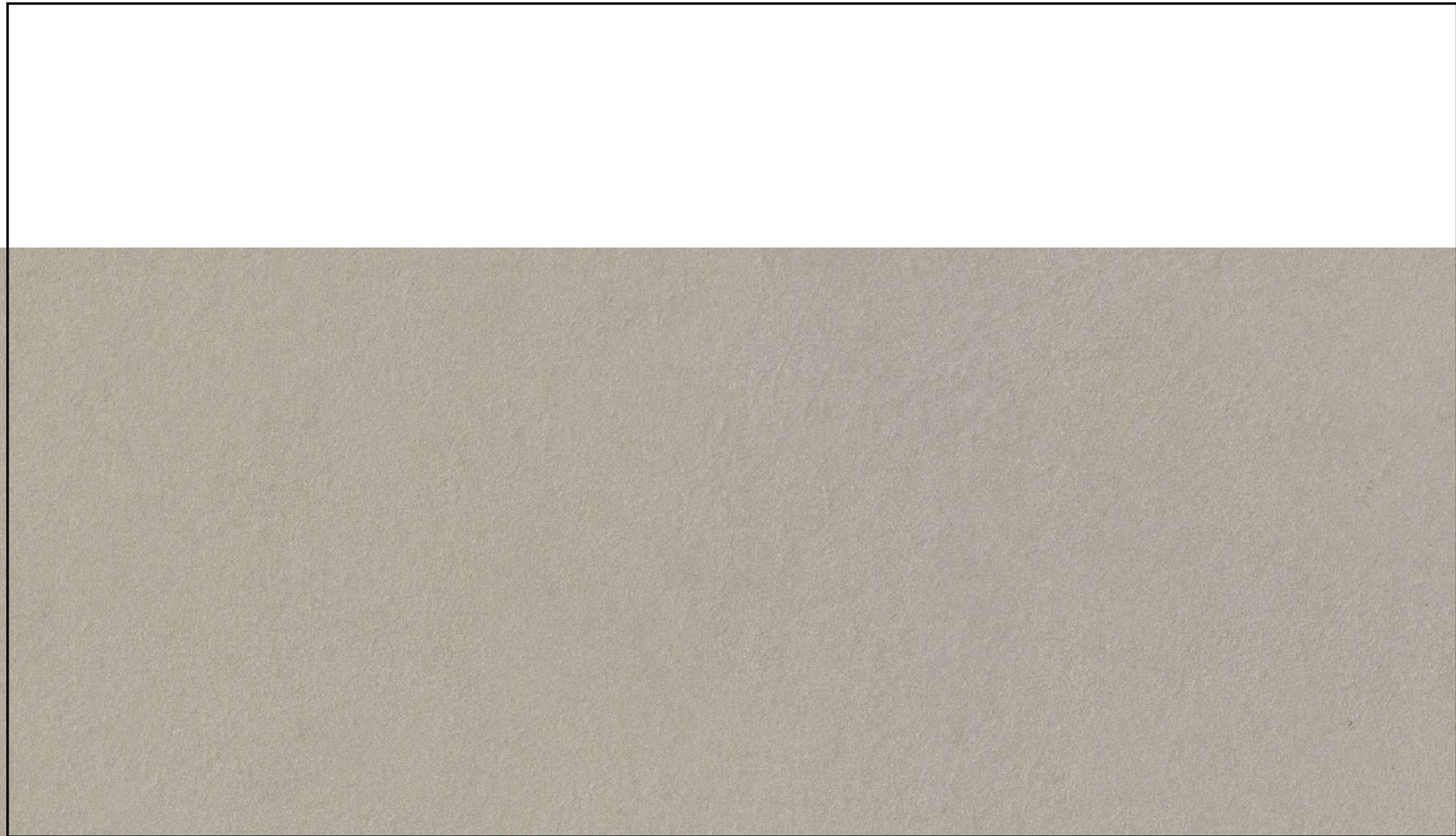


A freestanding washbasin, customized by a striped cladding, that follow its curvature, creates a harmonious com-

position with the lines of the mirror and the pendant lamp, in a bathroom with perfect balance.

Three self-supporting sinks, clad with the same striped collection used on the walls, create a symmetries in

which the round bases of the washbasins, which enhance their three-dimensionality, lighten the rigorous squaring of the mirrors.





piano^{low} .70

Classico e contemporaneo si alternano in questo bagno in cui le cromie delle pareti vengono riprese dagli oggetti della stanza, con la sola eccezione del contenitore sospeso del lavabo, che emerge, così, in tutta la sua eleganza.

piano^{low}.70

LOOM

50

51



nuances fiamma
charm experience calacatta pink



Classic and contemporary alternate in this bathroom where the colors of the walls are evoked by the objects in

the room, with the only exception of the suspended cabinets, which emerge, thus, in all its elegance.



piano^{low} .90

Un bagno contemporaneo, in cui le tonalità delle pareti danno vita un ambiente caldo e accogliente, dall'eleganza moderna e essenziale, permettendo al mobile lavabo di trovare una perfetta collocazione al suo interno.



nuances avorio
nuances cielo
nuances tortora
nuances listello tratto avorio

A contemporary bathroom, in which the shades of the walls give life to a warm and welcoming environment, with

modern and essential elegance, allowing the sink cabinet to find a perfect location inside.

piano^{low} .140

Un mobile sospeso a due ante, al cui interno sono ospitate le ciotole in ceramica dei lavabi, dialoga armonicamente con tutti gli altri elementi di questo bagno dallo stile moderno e bilanciato, capace di coniugare estetica e funzionalità.





nuances avorio
nuances fiamma

A two-doors hanging cabinet, elements of this modern and balanced style on top of which there are the ceramic basins, bathroom, capable of combining aesthetics dialogues harmoniously with all the other and functionality.





LOOM

60

61

piano^{low} .180

Grazie al design moderno e alle cromie dei rivestimenti, i due contenitori sospesi si abbinano perfettamente all'eleganza classica delle pareti effetto marmo, in un bagno dall'atmosfera senza tempo.



piano^{low}.180

nuances tortora
charm experience blu saint laurent
nuances cielo



Thanks to the modern design and the colours of the claddings, the two suspended cabinets perfectly match

the classic elegance of the marble-effect walls, in a bathroom with a timeless atmosphere.



collection

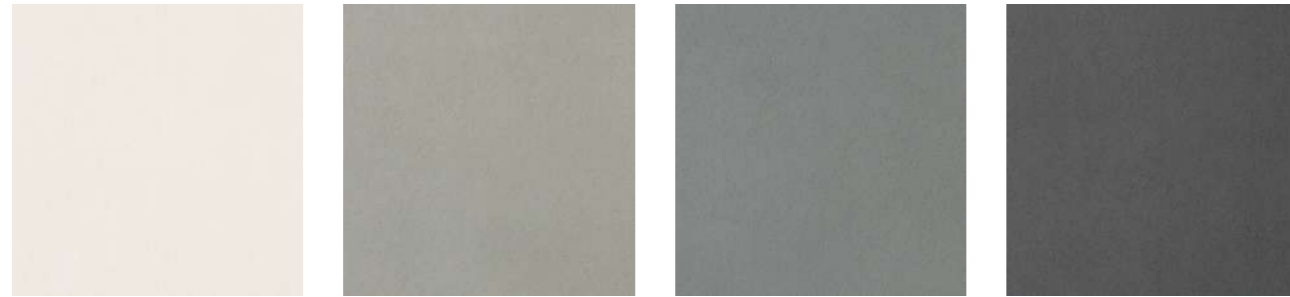
LOOM

66

67

technical

Mobili colori disponibili / Available furniture colours



Bianco Grigio Antracite Nero



Avorio Tortora Cipria Marrone

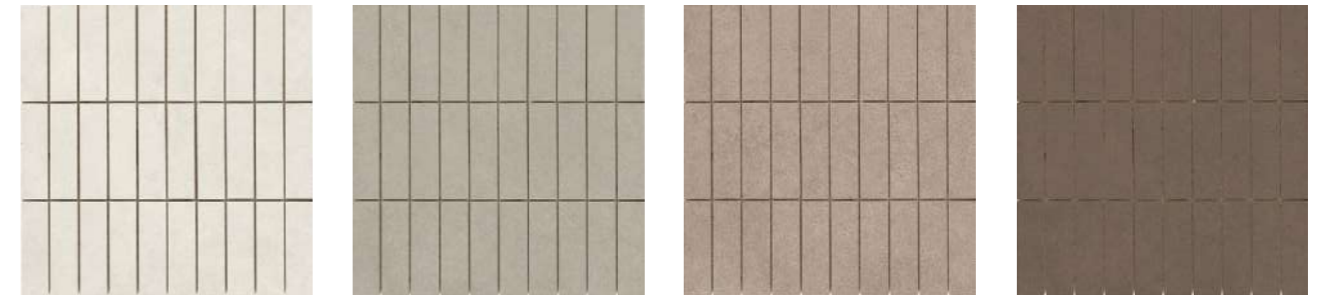


Salvia Cielo Fiamma

Mobili colori disponibili / Available furniture colours



Bianco Grigio Antracite Nero

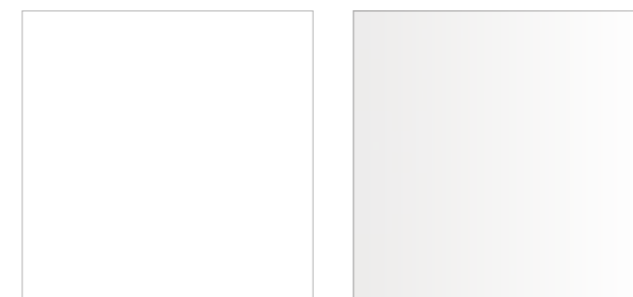


Avorio Tortora Cipria Marrone



Salvia Cielo Fiamma

Lavabi colori disponibili / Available washbasin colours

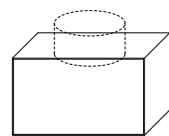


Bianco Opaco / White Matt Bianco Lucido / White Gloss

PERSONALIZZAZIONE
su richiesta in tutti i colori e muretti
6mm della collezione Mega.

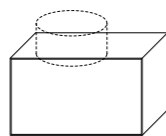
CUSTOMIZATION
on request in all 6 mm colors and muretti
of the Mega collection.

piano.70 (Nuances)



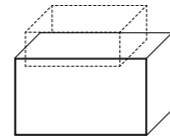
P70CTDX
PIANO 70 DX
per 1 ciotola tonda
for 1 round basin

70 x 41 x 41 cm
27^{1/2}" x 16^{1/8}" x 16^{1/8}"



P70CTSX
PIANO 70 SX
per 1 ciotola tonda
for 1 round basin

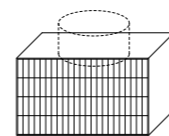
70 x 41 x 41 cm
27^{1/2}" x 16^{1/8}" x 16^{1/8}"



P70CRCE
PIANO 70
per 1 ciotola rettangolare
for 1 rectangular basin

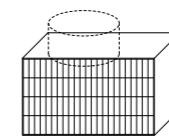
70 x 41 x 41 cm
27^{1/2}" x 16^{1/8}" x 16^{1/8}"

piano.70 (Nuances Muretto)



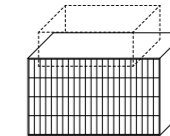
P70CTDXM
PIANO 70 DX
per 1 ciotola tonda
for 1 round basin

70 x 41 x 41 cm
27^{1/2}" x 16^{1/8}" x 16^{1/8}"



P70CTSXM
PIANO 70 SX
per 1 ciotola tonda
for 1 round basin

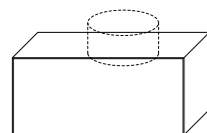
70 x 41 x 41 cm
27^{1/2}" x 16^{1/8}" x 16^{1/8}"



P70CRCEM
PIANO 70
per 1 ciotola rettangolare
for 1 rectangular basin

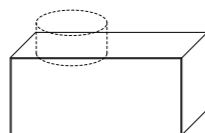
70 x 41 x 41 cm
27^{1/2}" x 16^{1/8}" x 16^{1/8}"

piano.90 (Nuances)



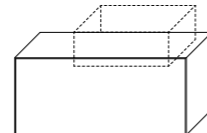
P90CTDX
PIANO 90 DX
per 1 ciotola tonda
for 1 round basin

91 x 41 x 41 cm
35^{7/8}" x 16^{1/8}" x 16^{1/8}"



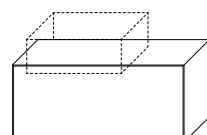
P90CTSX
PIANO 90 SX
per 1 ciotola tonda
for 1 round basin

91 x 41 x 41 cm
35^{7/8}" x 16^{1/8}" x 16^{1/8}"



P90CRDX
PIANO 90 DX
per 1 ciotola rettangolare
for 1 rectangular basin

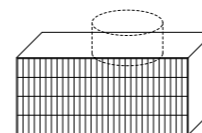
91 x 41 x 41 cm
35^{7/8}" x 16^{1/8}" x 16^{1/8}"



P90CRSX
PIANO 90 SX
per 1 ciotola rettangolare
for 1 rectangular basin

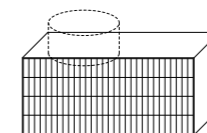
91 x 41 x 41 cm
35^{7/8}" x 16^{1/8}" x 16^{1/8}"

piano.90 (Nuances Muretto)



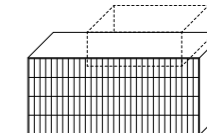
P90CTDXM
PIANO 90 DX
per 1 ciotola tonda
for 1 round basin

91 x 41 x 41 cm
35^{7/8}" x 16^{1/8}" x 16^{1/8}"



P90CTSXM
PIANO 90 SX
per 1 ciotola tonda
for 1 round basin

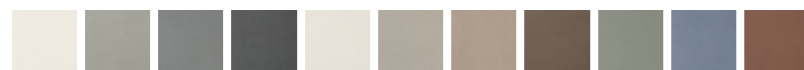
91 x 41 x 41 cm
35^{7/8}" x 16^{1/8}" x 16^{1/8}"



P90CRDXM
PIANO 90 DX
per 1 ciotola rettangolare
for 1 rectangular basin

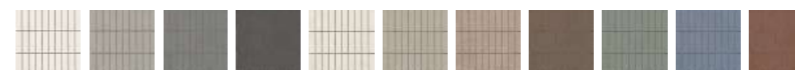
91 x 41 x 41 cm
35^{7/8}" x 16^{1/8}" x 16^{1/8}"

Mobile Piano disponibile / Piano furniture available in Nuances
/ Bianco, Grigio, Antracite, Nero, Avorio, Tortora, Cipria, Marrone, Salvia, Cielo, Fiamma



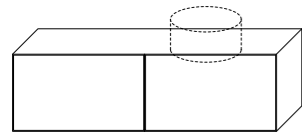
Codici e misure sono riferite solo al mobile Piano lavabo escluso. Personalizzazione su richiesta in tutti i colori e muretti 6mm della collezione Mega.
/ Codes and dimensions refer only to the Piano cabinet, not including the washbasin. Customization on request in all 6 mm colors and muretti of the Mega collection.

Mobile Piano disponibile / Piano furniture available in Nuances Muretto
/ Bianco, Grigio, Antracite, Nero, Avorio, Tortora, Cipria, Marrone, Salvia, Cielo, Fiamma



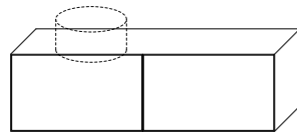
Codici e misure sono riferite solo al mobile Piano lavabo escluso. Personalizzazione su richiesta in tutti i colori e muretti 6mm della collezione Mega.
/ Codes and dimensions refer only to the Piano cabinet, not including the washbasin. Customization on request in all 6 mm colors and muretti of the Mega collection.

piano.140 (Nuances)



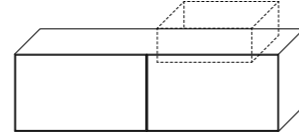
PS140CTDX
PIANO DOPPIO 140 DX
per 1 ciotola tonda
for 1 round basin

140 x 41 x 41 cm
55^{1/8}" x 16^{1/8}" x 16^{1/8}"



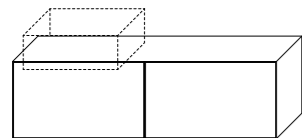
PS140CTSX
PIANO DOPPIO 140 SX
per 1 ciotola tonda
for 1 round basin

140 x 41 x 41 cm
55^{1/8}" x 16^{1/8}" x 16^{1/8}"



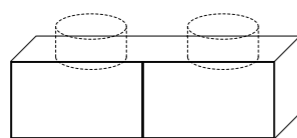
PS140CRDX
PIANO DOPPIO 140 DX
per 1 ciotola rettangolare
for 1 rectangular basin

140 x 41 x 41 cm
55^{1/8}" x 16^{1/8}" x 16^{1/8}"



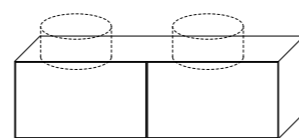
PS140CRSX
PIANO DOPPIO 140 SX
per 1 ciotola rettangolare
for 1 rectangular basin

140 x 41 x 41 cm
55^{1/8}" x 16^{1/8}" x 16^{1/8}"



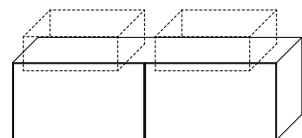
PD140CTDX
PIANO DOPPIO 140 DX
per 2 ciotole tonde
for 2 round basins

140 x 41 x 41 cm
55^{1/8}" x 16^{1/8}" x 16^{1/8}"



PD140CTSX
PIANO DOPPIO 140 SX
per 2 ciotole tonde
for 2 round basins

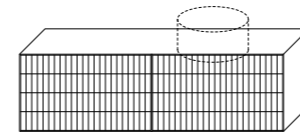
140 x 41 x 41 cm
55^{1/8}" x 16^{1/8}" x 16^{1/8}"



PD140CRCE
PIANO DOPPIO 140
per 2 ciotole rettangolari
for 2 rectangular basins

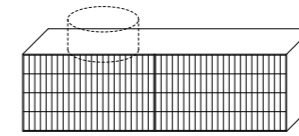
140 x 41 x 41 cm
55^{1/8}" x 16^{1/8}" x 16^{1/8}"

piano.140 (Nuances Muretto)



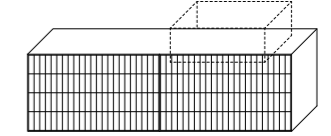
PS140CTDXM
PIANO DOPPIO 140 DX
per 1 ciotola tonda
for 1 round basin

140 x 41 x 41 cm
55^{1/8}" x 16^{1/8}" x 16^{1/8}"



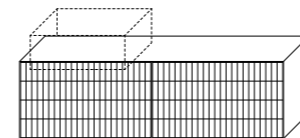
PS140CTSXM
PIANO DOPPIO 140 SX
per 1 ciotola tonda
for 1 round basin

140 x 41 x 41 cm
55^{1/8}" x 16^{1/8}" x 16^{1/8}"



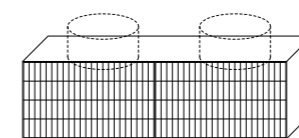
PS140CRDXM
PIANO DOPPIO 140 DX
per 1 ciotola rettangolare
for 1 rectangular basin

140 x 41 x 41 cm
55^{1/8}" x 16^{1/8}" x 16^{1/8}"



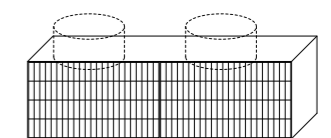
PS140CRSXM
PIANO DOPPIO 140 SX
per 1 ciotola rettangolare
for 1 rectangular basin

140 x 41 x 41 cm
55^{1/8}" x 16^{1/8}" x 16^{1/8}"



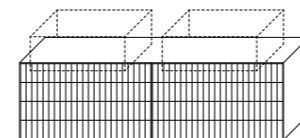
PD140CTDXM
PIANO DOPPIO 140 DX
per 2 ciotole tonde
for 2 round basins

140 x 41 x 41 cm
55^{1/8}" x 16^{1/8}" x 16^{1/8}"



PD140CTSXM
PIANO DOPPIO 140 SX
per 2 ciotole tonde
for 2 round basins

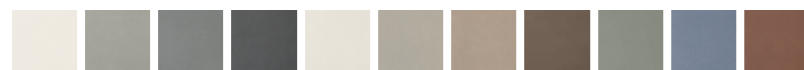
140 x 41 x 41 cm
55^{1/8}" x 16^{1/8}" x 16^{1/8}"



PD140CRCEM
PIANO DOPPIO 140
per 2 ciotole rettangolari
for 2 rectangular basins

140 x 41 x 41 cm
55^{1/8}" x 16^{1/8}" x 16^{1/8}"

Mobile Piano disponibile / Piano furniture available in Nuances
/ Bianco, Grigio, Antracite, Nero, Avorio, Tortora, Cipria, Marrone, Salvia, Cielo, Fiamma



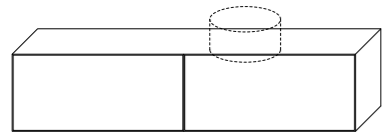
Codici e misure sono riferite solo al mobile Piano lavabo escluso. Personalizzazione su richiesta in tutti i colori e muretti 6mm della collezione Mega.
/ Codes and dimensions refer only to the Piano cabinet, not including the washbasin. Customization on request in all 6 mm colors and muretti of the Mega collection.

Mobile Piano disponibile / Piano furniture available in Nuances Muretto
/ Bianco, Grigio, Antracite, Nero, Avorio, Tortora, Cipria, Marrone, Salvia, Cielo, Fiamma



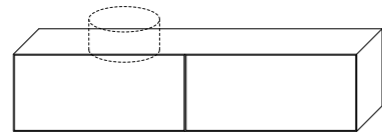
Codici e misure sono riferite solo al mobile Piano lavabo escluso. Personalizzazione su richiesta in tutti i colori e muretti 6mm della collezione Mega.
/ Codes and dimensions refer only to the Piano cabinet, not including the washbasin. Customization on request in all 6 mm colors and muretti of the Mega collection.

piano.180 (Nuances)



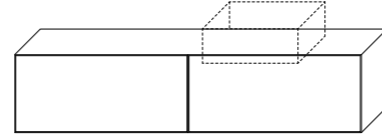
PS180CTDX
PIANO DOPPIO 180 DX
per 1 ciotola tonda
for 1 round basin

182 x 41 x 41 cm
71^{5/8}" x 16^{1/8}" x 16^{1/8}"



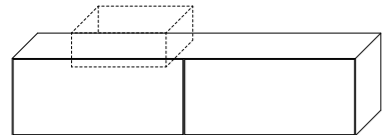
PS180CTSX
PIANO DOPPIO 180 SX
per 1 ciotola tonda
for 1 round basin

182 x 41 x 41 cm
71^{5/8}" x 16^{1/8}" x 16^{1/8}"



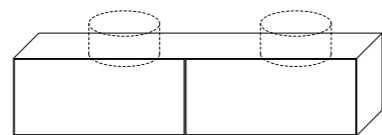
PS180CRDX
PIANO DOPPIO 180 DX
per 1 ciotola rettangolare
for 1 rectangular basin

182 x 41 x 41 cm
71^{5/8}" x 16^{1/8}" x 16^{1/8}"



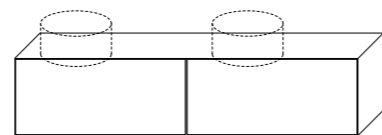
PS180CRSX
PIANO DOPPIO 180 SX
per 1 ciotola rettangolare
for 1 rectangular basin

182 x 41 x 41 cm
71^{5/8}" x 16^{1/8}" x 16^{1/8}"



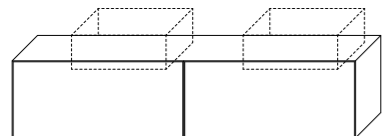
PD180CTDX
PIANO DOPPIO 180 DX
per 2 ciotole tonde
for 2 round basins

182 x 41 x 41 cm
71^{5/8}" x 16^{1/8}" x 16^{1/8}"



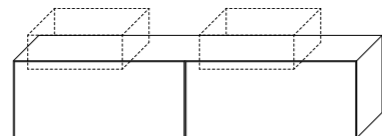
PD180CTSX
PIANO DOPPIO 180 SX
per 2 ciotole tonde
for 2 round basins

182 x 41 x 41 cm
71^{5/8}" x 16^{1/8}" x 16^{1/8}"



PD180CRDX
PIANO DOPPIO 180 DX
per 2 ciotole rettangolari
for 2 rectangular basins

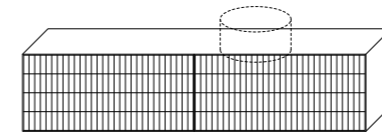
182 x 41 x 41 cm
71^{5/8}" x 16^{1/8}" x 16^{1/8}"



PD180CRSX
PIANO DOPPIO 180 SX
per 2 ciotole rettangolari
for 2 rectangular basins

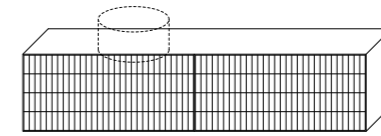
182 x 41 x 41 cm
71^{5/8}" x 16^{1/8}" x 16^{1/8}"

piano.180 (Nuances Muretto)



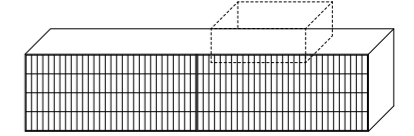
PS180CTDXM
PIANO DOPPIO 180 DX
per 1 ciotola tonda
for 1 round basin

182 x 41 x 41 cm
71^{5/8}" x 16^{1/8}" x 16^{1/8}"



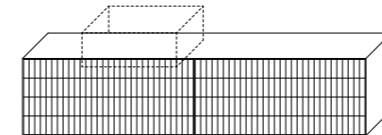
PS180CTSXM
PIANO DOPPIO 180 SX
per 1 ciotola tonda
for 1 round basin

182 x 41 x 41 cm
71^{5/8}" x 16^{1/8}" x 16^{1/8}"



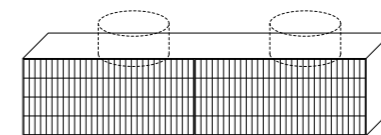
PS180CRDXM
PIANO DOPPIO 180 DX
per 1 ciotola rettangolare
for 1 rectangular basin

182 x 41 x 41 cm
71^{5/8}" x 16^{1/8}" x 16^{1/8}"



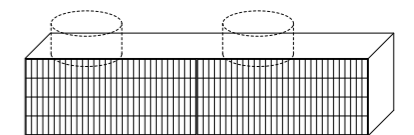
PS180CRSXM
PIANO DOPPIO 180 SX
per 1 ciotola rettangolare
for 1 rectangular basin

182 x 41 x 41 cm
71^{5/8}" x 16^{1/8}" x 16^{1/8}"



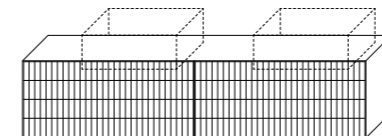
PD180CTDXM
PIANO DOPPIO 180 DX
per 2 ciotole tonde
for 2 round basins

182 x 41 x 41 cm
71^{5/8}" x 16^{1/8}" x 16^{1/8}"



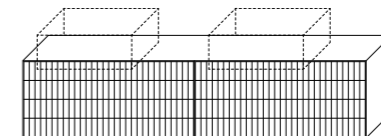
PD180CTSXM
PIANO DOPPIO 180 SX
per 2 ciotole tonde
for 2 round basins

182 x 41 x 41 cm
71^{5/8}" x 16^{1/8}" x 16^{1/8}"



PD180CRDXM
PIANO DOPPIO 180 DX
per 2 ciotole rettangolari
for 2 rectangular basins

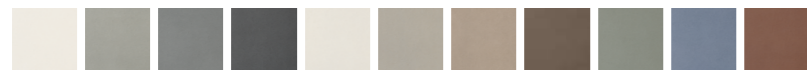
182 x 41 x 41 cm
71^{5/8}" x 16^{1/8}" x 16^{1/8}"



PD180CRSXM
PIANO DOPPIO 180 SX
per 2 ciotole rettangolari
for 2 rectangular basins

182 x 41 x 41 cm
71^{5/8}" x 16^{1/8}" x 16^{1/8}"

Mobile Piano disponibile / Piano furniture available in Nuances
/ Bianco, Grigio, Antracite, Nero, Avorio, Tortora, Cipria, Marrone, Salvia, Cielo, Fiamma



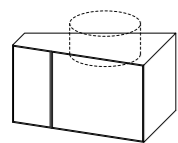
Codici e misure sono riferite solo al mobile Piano
lavabo escluso. Personalizzazione su richiesta
in tutti i colori e muretti 6mm della collezione Mega.
/ Codes and dimensions refer only to the Piano
cabinet, not including the washbasin. Customization
on request in all 6 mm colors and muretti of the
Mega collection.

Mobile Piano disponibile / Piano furniture available in Nuances Muretto
/ Bianco, Grigio, Antracite, Nero, Avorio, Tortora, Cipria, Marrone, Salvia, Cielo, Fiamma



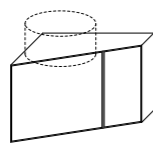
Codici e misure sono riferite solo al mobile Piano
lavabo escluso. Personalizzazione su richiesta
in tutti i colori e muretti 6mm della collezione Mega.
/ Codes and dimensions refer only to the Piano
cabinet, not including the washbasin. Customization
on request in all 6 mm colors and muretti of the
Mega collection.

piano^{angle}.80 (Nuances)



PA80CTDX
PIANO ANGOLARE 80 DX
per 1 ciotola tonda
for 1 round basin

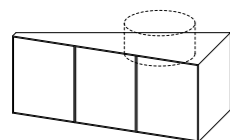
81 x 48 x 41 cm
31^{7/8}" x 18^{7/8}" x 16^{1/8}"



PA80CTSX
PIANO ANGOLARE 80 SX
per 1 ciotola tonda
for 1 round basin

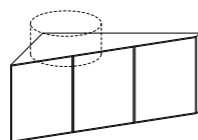
81 x 48 x 41 cm
31^{7/8}" x 18^{7/8}" x 16^{1/8}"

piano^{angle}.110 (Nuances)



PA113CTDX
PIANO ANGOLARE 113 DX
per 1 ciotola tonda
for 1 round basin

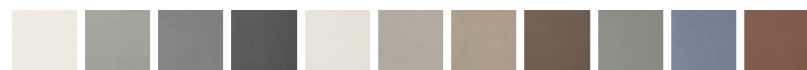
114 x 48 x 41 cm
44^{7/8}" x 18^{7/8}" x 16^{1/8}"



PA113CTSX
PIANO ANGOLARE 113 SX
per 1 ciotola tonda
for 1 round basin

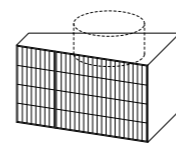
114 x 48 x 41 cm
44^{7/8}" x 18^{7/8}" x 16^{1/8}"

Mobile Piano disponibile / Piano furniture available in Nuances
/ Bianco, Grigio, Antracite, Nero, Avorio, Tortora, Cipria, Marrone, Salvia, Cielo, Fiamma



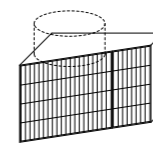
Codici e misure sono riferite solo al mobile Piano
lavabo escluso. Personalizzazione su richiesta
in tutti i colori e muretti 6mm della collezione Mega.
/ Codes and dimensions refer only to the Piano
cabinet, not including the washbasin. Customization
on request in all 6 mm colors and muretti of the
Mega collection.

piano^{angle}.80 (Nuances Muretto)



PA80CTDXM
PIANO ANGOLARE 80 DX
per 1 ciotola tonda
for 1 round basin

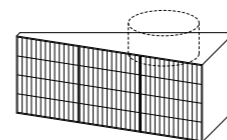
81 x 48 x 41 cm
31^{7/8}" x 18^{7/8}" x 16^{1/8}"



PA80CTSXM
PIANO ANGOLARE 80 SX
per 1 ciotola tonda
for 1 round basin

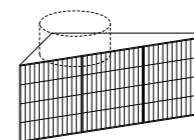
81 x 48 x 41 cm
31^{7/8}" x 18^{7/8}" x 16^{1/8}"

piano^{angle}.110 (Nuances Muretto)



PA113CTDXM
PIANO ANGOLARE 113 DX
per 1 ciotola tonda
for 1 round basin

114 x 48 x 41 cm
44^{7/8}" x 18^{7/8}" x 16^{1/8}"



PA113CTSXM
PIANO ANGOLARE 113 SX
per 1 ciotola tonda
for 1 round basin

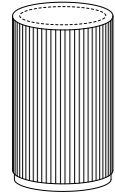
114 x 48 x 41 cm
44^{7/8}" x 18^{7/8}" x 16^{1/8}"

Mobile Piano disponibile / Piano furniture available in Nuances Muretto
/ Bianco, Grigio, Antracite, Nero, Avorio, Tortora, Cipria, Marrone, Salvia, Cielo, Fiamma



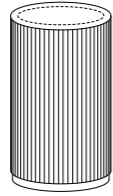
Codici e misure sono riferite solo al mobile Piano
lavabo escluso. Personalizzazione su richiesta
in tutti i colori e muretti 6mm della collezione Mega.
/ Codes and dimensions refer only to the Piano
cabinet, not including the washbasin. Customization
on request in all 6 mm colors and muretti of the
Mega collection.

cilindro.50 (Nuances Listello Tratto)



C50TSM
 CILINDRO DIAM 50 ALT 87
 scarico muro
 wall drainage

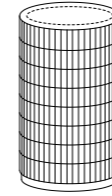
Ø50 x 87 cm
 Ø19^{3/4} x 34^{1/4}"



C50TSP
 CILINDRO DIAM 50 ALT 87
 scarico pavimento
 floor drainage

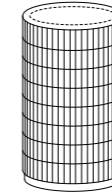
Ø50 x 87 cm
 Ø19^{3/4} x 34^{1/4}"

cilindro.50 (Nuances Muretto)



C50MSM
 CILINDRO DIAM 50 ALT 87
 scarico muro
 wall drainage

Ø50 x 87 cm
 Ø19^{3/4} x 34^{1/4}"



C50MSP
 CILINDRO DIAM 50 ALT 87
 scarico pavimento
 floor drainage

Ø50 x 87 cm
 Ø19^{3/4} x 34^{1/4}"

Mobile Cilindro disponibile / Cilindro furniture available in Nuances Listello
 / Bianco, Grigio, Antracite, Nero, Avorio, Tortora, Cipria, Marrone, Salvia, Cielo, Fiamma



Codici e misure sono riferite solo al mobile Cilindro lavabo escluso. Personalizzazione su richiesta in tutti i colori e muretti 6mm della collezione Mega.
 / Codes and dimensions refer only to the Cilindro cabinet, not including the washbasin. Customization on request in all 6 mm colors and muretti of the Mega collection.

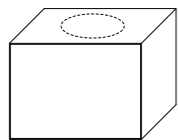
Mobile Cilindro disponibile / Cilindro furniture available in Nuances Muretto
 / Bianco, Grigio, Antracite, Nero, Avorio, Tortora, Cipria, Marrone, Salvia, Cielo, Fiamma



Codici e misure sono riferite solo al mobile Cilindro lavabo escluso. Personalizzazione su richiesta in tutti i colori e muretti 6mm della collezione Mega.
 / Codes and dimensions refer only to the Cilindro cabinet, not including the washbasin. Customization on request in all 6 mm colors and muretti of the Mega collection.

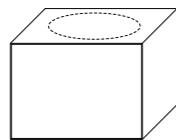
piano^{low}.70 (Nuances)

Disponibile solo con rubinetto a muro.
/ Only available with wall mounted tap.



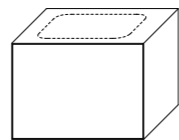
P70STCE
PIANO 70
per 1 sottopiano tondo
for 1 undercounter round basin

70 x 55 x 51 cm
27¹/₂" x 21⁵/₈" x 20¹/₈"



P70SOCE
PIANO 70
per 1 sottopiano ovale
for 1 undercounter oval basin

70 x 55 x 51 cm
27¹/₂" x 21⁵/₈" x 20¹/₈"

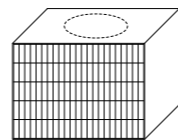


P70SRCE
PIANO 70
per 1 sottopiano rettangolare
for 1 undercounter rectangular basin

70 x 55 x 51 cm
27¹/₂" x 21⁵/₈" x 20¹/₈"

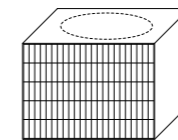
piano^{low}.70 (Nuances Muretto)

Disponibile solo con rubinetto a muro.
/ Only available with wall mounted tap.



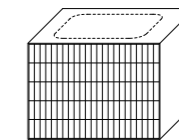
P70STCEM
PIANO 70
per 1 sottopiano tondo
for 1 undercounter round basin

70 x 55 x 51 cm
27¹/₂" x 21⁵/₈" x 20¹/₈"



P70SOCEM
PIANO 70
per 1 sottopiano ovale
for 1 undercounter oval basin

70 x 55 x 51 cm
27¹/₂" x 21⁵/₈" x 20¹/₈"

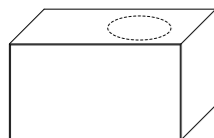


P70SRCEM
PIANO 70
per 1 sottopiano rettangolare
for 1 undercounter rectangular basin

70 x 55 x 51 cm
27¹/₂" x 21⁵/₈" x 20¹/₈"

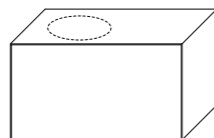
piano^{low}.90 (Nuances)

Disponibile solo con rubinetto a muro.
/ Only available with wall mounted tap.



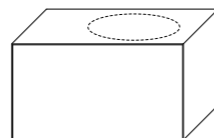
P90STDx
PIANO 90 DX
per 1 sottopiano tondo
for 1 undercounter round basin

91 x 55 x 51 cm
35⁷/₈" x 21⁵/₈" x 20¹/₈"



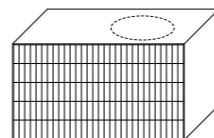
P90STSX
PIANO 90 SX
per 1 sottopiano tondo
for 1 undercounter round basin

91 x 55 x 51 cm
35⁷/₈" x 21⁵/₈" x 20¹/₈"



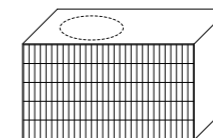
P90SODx
PIANO 90 DX
per 1 sottopiano ovale
for 1 undercounter oval basin

91 x 55 x 51 cm
35⁷/₈" x 21⁵/₈" x 20¹/₈"



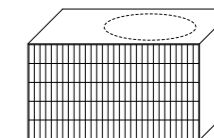
P90STDxM
PIANO 90 DX
per 1 sottopiano tondo
for 1 undercounter round basin

91 x 55 x 51 cm
35⁷/₈" x 21⁵/₈" x 20¹/₈"



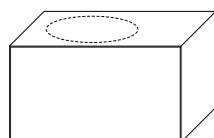
P90STxM
PIANO 90 SX
per 1 sottopiano tondo
for 1 undercounter round basin

91 x 55 x 51 cm
35⁷/₈" x 21⁵/₈" x 20¹/₈"



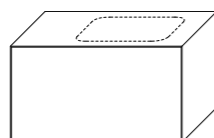
P90SODxM
PIANO 90 DX
per 1 sottopiano ovale
for 1 undercounter oval basin

91 x 55 x 51 cm
35⁷/₈" x 21⁵/₈" x 20¹/₈"



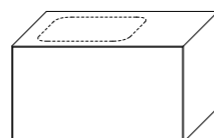
P90SOSx
PIANO 90 SX
per 1 sottopiano ovale
for 1 undercounter oval basin

91 x 55 x 51 cm
35⁷/₈" x 21⁵/₈" x 20¹/₈"



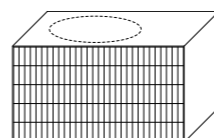
P90SRDx
PIANO 90 DX
per 1 sottopiano rettangolare
for 1 undercounter rectangular basin

91 x 55 x 51 cm
35⁷/₈" x 21⁵/₈" x 20¹/₈"



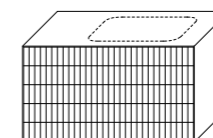
P90SRx
PIANO 90 SX
per 1 sottopiano rettangolare
for 1 undercounter rectangular basin

91 x 55 x 51 cm
35⁷/₈" x 21⁵/₈" x 20¹/₈"



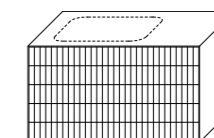
P90SOSxM
PIANO 90 SX
per 1 sottopiano ovale
for 1 undercounter oval basin

91 x 55 x 51 cm
35⁷/₈" x 21⁵/₈" x 20¹/₈"



P90SRDxM
PIANO 90 DX
per 1 sottopiano rettangolare
for 1 undercounter rectangular basin

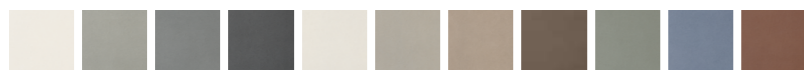
91 x 55 x 51 cm
35⁷/₈" x 21⁵/₈" x 20¹/₈"



P90SRxM
PIANO 90 SX
per 1 sottopiano rettangolare
for 1 undercounter rectangular basin

91 x 55 x 51 cm
35⁷/₈" x 21⁵/₈" x 20¹/₈"

Mobile Piano disponibile / Piano furniture available in Nuances
/ Bianco, Grigio, Antracite, Nero, Avorio, Tortora, Cipria, Marrone, Salvia, Cielo, Fiamma



Codici e misure sono riferite solo al mobile Piano lavabo escluso. Personalizzazione su richiesta in tutti i colori e muretti 6mm della collezione Mega.
/ Codes and dimensions refer only to the Piano cabinet, not including the washbasin. Customization on request in all 6 mm colors and muretti of the Mega collection.

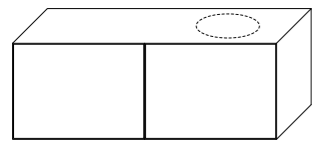
Mobile Piano disponibile / Piano furniture available in Nuances Muretto
/ Bianco, Grigio, Antracite, Nero, Avorio, Tortora, Cipria, Marrone, Salvia, Cielo, Fiamma



Codici e misure sono riferite solo al mobile Piano lavabo escluso. Personalizzazione su richiesta in tutti i colori e muretti 6mm della collezione Mega.
/ Codes and dimensions refer only to the Piano cabinet, not including the washbasin. Customization on request in all 6 mm colors and muretti of the Mega collection.

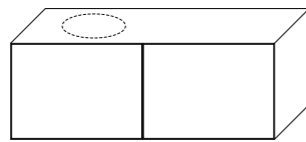
piano^{low}.140 (Nuances)

Disponibile solo con rubinetto a muro.
/ Only available with wall mounted tap.



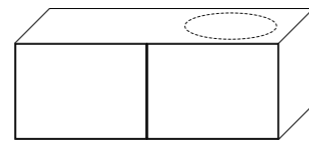
PS140STDX
PIANO DOPPIO 140 DX
per 1 sottopiano tondo
for 1 undercounter round basin

140 x 55 x 51 cm
55¹/₈" x 21⁵/₈" x 20¹/₈"



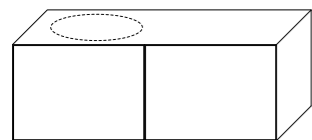
PS140STSX
PIANO DOPPIO 140 SX
per 1 sottopiano tondo
for 1 undercounter round basin

140 x 55 x 51 cm
55¹/₈" x 21⁵/₈" x 20¹/₈"



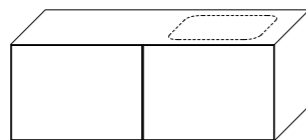
PS140SODX
PIANO DOPPIO 140 DX
per 1 sottopiano ovale
for 1 undercounter oval basin

140 x 55 x 51 cm
55¹/₈" x 21⁵/₈" x 20¹/₈"



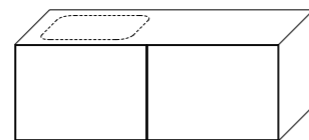
PS140SOSX
PIANO DOPPIO 140 SX
per 1 sottopiano ovale
for 1 undercounter oval basin

140 x 55 x 51 cm
55¹/₈" x 21⁵/₈" x 20¹/₈"



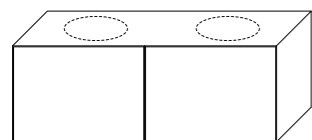
PS140SRDX
PIANO DOPPIO 140 SX
per 1 sottopiano rettangolare
for 1 undercounter rectangular basin

140 x 55 x 51 cm
55¹/₈" x 21⁵/₈" x 20¹/₈"



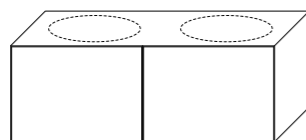
PS140SRSX
PIANO DOPPIO 140 SX
per 1 sottopiano rettangolare
for 1 undercounter rectangular basin

140 x 55 x 51 cm
55¹/₈" x 21⁵/₈" x 20¹/₈"



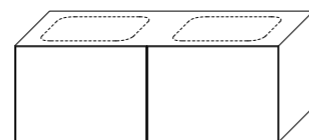
PD140STCE
PIANO DOPPIO 140
per 2 sottopiani tondi
for 2 undercounter round basins

140 x 55 x 51 cm
55¹/₈" x 21⁵/₈" x 20¹/₈"



PD140SOCE
PIANO DOPPIO 140
per 2 sottopiani ovali
for 2 undercounter oval basins

140 x 55 x 51 cm
55¹/₈" x 21⁵/₈" x 20¹/₈"

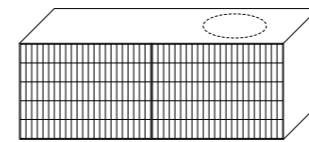


PD140SRCE
PIANO DOPPIO 140
per 2 sottopiani rettangolari
for 2 undercounter rectangular basins

140 x 55 x 51 cm
55¹/₈" x 21⁵/₈" x 20¹/₈"

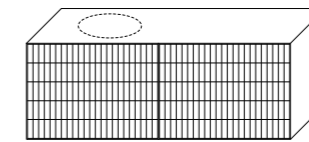
piano^{low}.140 (Nuances Muretto)

Disponibile solo con rubinetto a muro.
/ Only available with wall mounted tap.



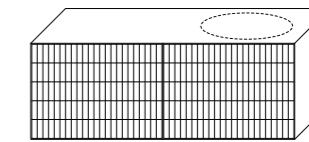
PS140STDXM
PIANO DOPPIO 140 DX
per 1 sottopiano tondo
for 1 undercounter round basin

140 x 55 x 51 cm
55¹/₈" x 21⁵/₈" x 20¹/₈"



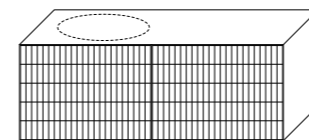
PS140STSXM
PIANO DOPPIO 140 SX
per 1 sottopiano tondo
for 1 undercounter round basin

140 x 55 x 51 cm
55¹/₈" x 21⁵/₈" x 20¹/₈"



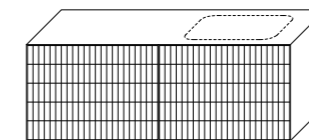
PS140SODXM
PIANO DOPPIO 140 DX
per 1 sottopiano ovale
for 1 undercounter oval basin

140 x 55 x 51 cm
55¹/₈" x 21⁵/₈" x 20¹/₈"



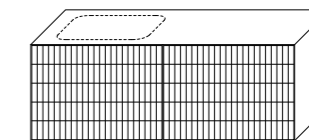
PS140SOSXM
PIANO DOPPIO 140 SX
per 1 sottopiano ovale
for 1 undercounter oval basin

140 x 55 x 51 cm
55¹/₈" x 21⁵/₈" x 20¹/₈"



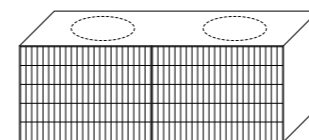
PS140SRDXM
PIANO DOPPIO 140 DX
per 1 sottopiano rettangolare
for 1 undercounter rectangular basin

140 x 55 x 51 cm
55¹/₈" x 21⁵/₈" x 20¹/₈"



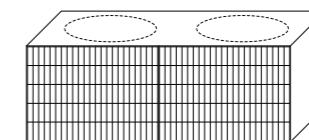
PS140SRSXM
PIANO DOPPIO 140 SX
per 1 sottopiano rettangolare
for 1 undercounter rectangular basin

140 x 55 x 51 cm
55¹/₈" x 21⁵/₈" x 20¹/₈"



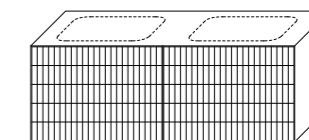
PD140STCEM
PIANO DOPPIO 140
per 2 sottopiani tondi
for 2 undercounter round basins

140 x 55 x 51 cm
55¹/₈" x 21⁵/₈" x 20¹/₈"



PD140SOCEM
PIANO DOPPIO 140
per 2 sottopiani ovali
for 2 undercounter oval basins

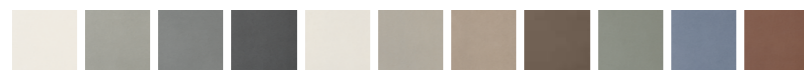
140 x 55 x 51 cm
55¹/₈" x 21⁵/₈" x 20¹/₈"



PD140SRCEM
PIANO DOPPIO 140
per 2 sottopiani rettangolari
for 2 undercounter rectangular basins

140 x 55 x 51 cm
55¹/₈" x 21⁵/₈" x 20¹/₈"

Mobile Piano disponibile / Piano furniture available in Nuances
/ Bianco, Grigio, Antracite, Nero, Avorio, Tortora, Cipria, Marrone, Salvia, Cielo, Fiamma



Codici e misure sono riferite solo al mobile Piano lavabo escluso. Personalizzazione su richiesta in tutti i colori e muretti 6mm della collezione Mega.
/ Codes and dimensions refer only to the Piano cabinet, not including the washbasin. Customization on request in all 6 mm colors and muretti of the Mega collection.

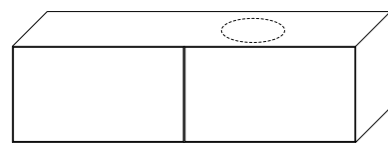
Mobile Piano disponibile / Piano furniture available in Nuances Muretto
/ Bianco, Grigio, Antracite, Nero, Avorio, Tortora, Cipria, Marrone, Salvia, Cielo, Fiamma



Codici e misure sono riferite solo al mobile Piano lavabo escluso. Personalizzazione su richiesta in tutti i colori e muretti 6mm della collezione Mega.
/ Codes and dimensions refer only to the Piano cabinet, not including the washbasin. Customization on request in all 6 mm colors and muretti of the Mega collection.

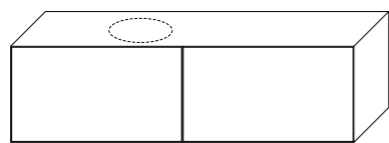
piano^{low}.180 (Nuances)

Disponibile solo con rubinetto a muro.
/ Only available with wall mounted tap.



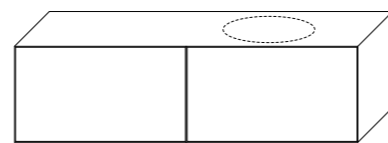
PS180STDX
PIANO DOPPIO 180 DX
per 1 sottopiano tondo
for 1 undercounter round basin

182 x 55 x 51 cm
71^{5/8}" x 21^{5/8}" x 20^{1/8}"



PS180STSX
PIANO DOPPIO 180 SX
per 1 sottopiano tondo
for 1 undercounter round basin

182 x 55 x 51 cm
71^{5/8}" x 21^{5/8}" x 20^{1/8}"



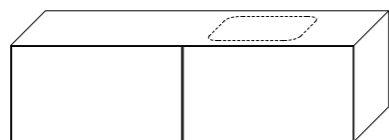
PS180SODX
PIANO DOPPIO 180 DX
per 1 sottopiano ovale
for 1 undercounter oval basin

182 x 55 x 51 cm
71^{5/8}" x 21^{5/8}" x 20^{1/8}"



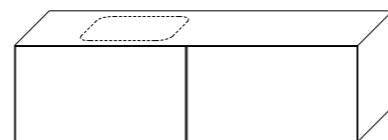
PS180SOSX
PIANO DOPPIO 180 SX
per 1 sottopiano ovale
for 1 undercounter oval basin

182 x 55 x 51 cm
71^{5/8}" x 21^{5/8}" x 20^{1/8}"



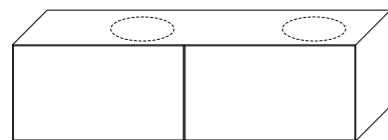
PS180SRDX
PIANO DOPPIO 180 DX
per 1 sottopiano rettangolare
for 1 undercounter rectangular basin

182 x 55 x 51 cm
71^{5/8}" x 21^{5/8}" x 20^{1/8}"



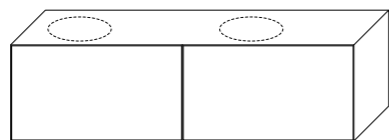
PS180RSX
PIANO DOPPIO 180 SX
per 1 sottopiano rettangolare
for 1 undercounter rectangular basin

182 x 55 x 51 cm
71^{5/8}" x 21^{5/8}" x 20^{1/8}"



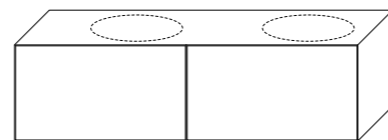
PD180STDX
PIANO DOPPIO 180 DX
per 2 sottopiani tondi
for 2 undercounter round basins

182 x 55 x 51 cm
71^{5/8}" x 21^{5/8}" x 20^{1/8}"



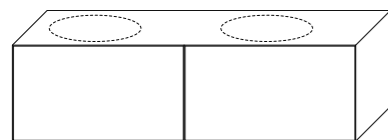
PD180STSX
PIANO DOPPIO 180 SX
per 2 sottopiani tondi
for 2 undercounter round basins

182 x 55 x 51 cm
71^{5/8}" x 21^{5/8}" x 20^{1/8}"



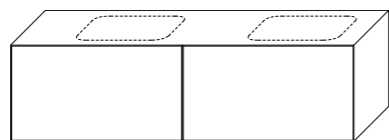
PD180SODX
PIANO DOPPIO 180 DX
per 2 sottopiani ovali
for 2 undercounter oval basins

182 x 55 x 51 cm
71^{5/8}" x 21^{5/8}" x 20^{1/8}"



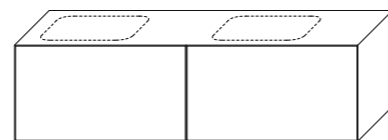
PD180SOSX
PIANO DOPPIO 180 SX
per 2 sottopiani ovali
for 2 undercounter oval basins

182 x 55 x 51 cm
71^{5/8}" x 21^{5/8}" x 20^{1/8}"



PD180SRDX
PIANO DOPPIO 180 DX
per 2 sottopiani rettangolari
for 2 undercounter rectangular basins

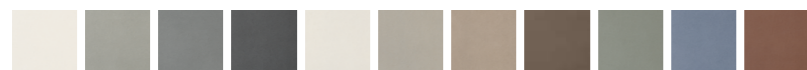
182 x 55 x 51 cm
71^{5/8}" x 21^{5/8}" x 20^{1/8}"



PD180RSX
PIANO DOPPIO 180 SX
per 2 sottopiani rettangolari
for 2 undercounter rectangular basins

182 x 55 x 51 cm
71^{5/8}" x 21^{5/8}" x 20^{1/8}"

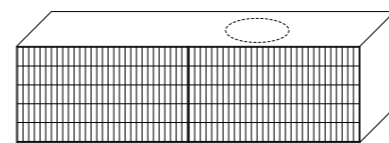
Mobile Piano disponibile / Piano furniture available in Nuances
/ Bianco, Grigio, Antracite, Nero, Avorio, Tortora, Cipria, Marrone, Salvia, Cielo, Fiamma



Codici e misure sono riferite solo al mobile Piano lavabo escluso. Personalizzazione su richiesta in tutti i colori e muretti 6mm della collezione Mega.
/ Codes and dimensions refer only to the Piano cabinet, not including the washbasin. Customization on request in all 6 mm colors and muretti of the Mega collection.

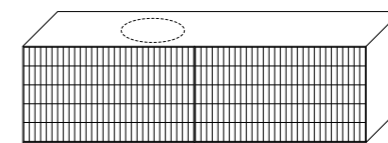
piano^{low}.180 (Nuances Muretto)

Disponibile solo con rubinetto a muro.
/ Only available with wall mounted tap.



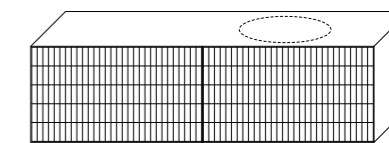
PS180STDXM
PIANO DOPPIO 180 DX
per 1 sottopiano tondo
for 1 undercounter round basin

182 x 55 x 51 cm
71^{5/8}" x 21^{5/8}" x 20^{1/8}"



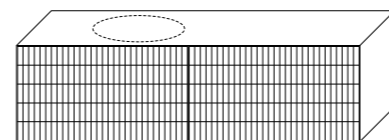
PS180STSXM
PIANO DOPPIO 180 SX
per 1 sottopiano tondo
for 1 undercounter round basin

182 x 55 x 51 cm
71^{5/8}" x 21^{5/8}" x 20^{1/8}"



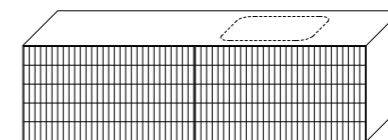
PS180SODXM
PIANO DOPPIO 180 DX
per 1 sottopiano ovale
for 1 undercounter oval basin

182 x 55 x 51 cm
71^{5/8}" x 21^{5/8}" x 20^{1/8}"



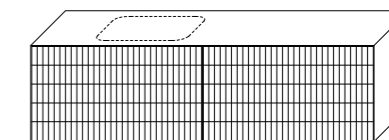
PS180SOSXM
PIANO DOPPIO 180 SX
per 1 sottopiano ovale
for 1 undercounter oval basin

182 x 55 x 51 cm
71^{5/8}" x 21^{5/8}" x 20^{1/8}"



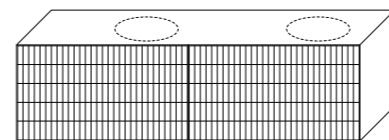
PS180SRDXM
PIANO DOPPIO 180 DX
per 1 sottopiano rettangolare
for 1 undercounter rectangular basin

182 x 55 x 51 cm
71^{5/8}" x 21^{5/8}" x 20^{1/8}"



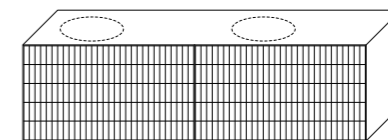
PS180RSXMX
PIANO DOPPIO 180 SX
per 1 sottopiano rettangolare
for 1 undercounter rectangular basin

182 x 55 x 51 cm
71^{5/8}" x 21^{5/8}" x 20^{1/8}"



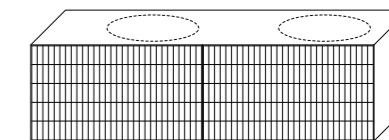
PD180STDXM
PIANO DOPPIO 180 DX
per 2 sottopiani tondi
for 2 undercounter round basins

182 x 55 x 51 cm
71^{5/8}" x 21^{5/8}" x 20^{1/8}"



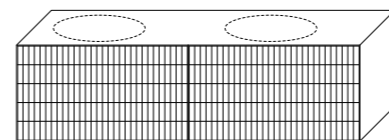
PD180STSXM
PIANO DOPPIO 180 SX
per 2 sottopiani tondi
for 2 undercounter round basins

182 x 55 x 51 cm
71^{5/8}" x 21^{5/8}" x 20^{1/8}"



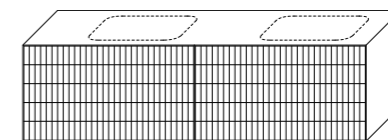
PD180SODXM
PIANO DOPPIO 180 DX
per 2 sottopiani ovali
for 2 undercounter oval basins

182 x 55 x 51 cm
71^{5/8}" x 21^{5/8}" x 20^{1/8}"



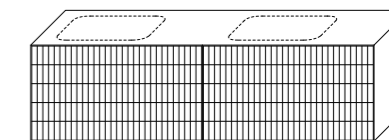
PD180SOSXM
PIANO DOPPIO 180 SX
per 2 sottopiani ovali
for 2 undercounter oval basins

182 x 55 x 51 cm
71^{5/8}" x 21^{5/8}" x 20^{1/8}"



PD180SRDXM
PIANO DOPPIO 180 DX
per 2 sottopiani rettangolari
for 2 undercounter rectangular basins

182 x 55 x 51 cm
71^{5/8}" x 21^{5/8}" x 20^{1/8}"



PD180RSXMX
PIANO DOPPIO 180 SX
per 2 sottopiani rettangolari
for 2 undercounter rectangular basins

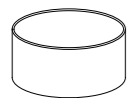
182 x 55 x 51 cm
71^{5/8}" x 21^{5/8}" x 20^{1/8}"

Mobile Piano disponibile / Piano furniture available in Nuances Muretto
/ Bianco, Grigio, Antracite, Nero, Avorio, Tortora, Cipria, Marrone, Salvia, Cielo, Fiamma



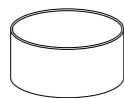
Codici e misure sono riferite solo al mobile Piano lavabo escluso. Personalizzazione su richiesta in tutti i colori e muretti 6mm della collezione Mega.
/ Codes and dimensions refer only to the Piano cabinet, not including the washbasin. Customization on request in all 6 mm colors and muretti of the Mega collection.

piano lavabi



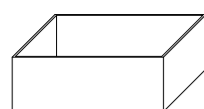
CT40BM
lavello ciotola tonda
bianco opaco
round bowl
white matt

Ø40 x 18 cm
15^{3/4}" x 7^{1/8}"



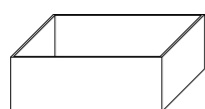
CT40BG
lavello ciotola tonda
bianco lucido
round bowl
white gloss

Ø40 x 18 cm
15^{3/4}" x 7^{1/8}"



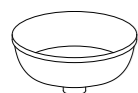
CR50BM
lavello ciotola rettangolare
bianco opaco
rectangular bowl
white gloss

50 x 40 x 18 cm
19^{3/4}" x 15^{3/4}" x 7^{1/8}"



CR50BG
lavello ciotola rettangolare
bianco lucido
rectangular bowl
white gloss

50 x 40 x 18 cm
19^{3/4}" x 15^{3/4}" x 7^{1/8}"



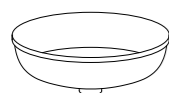
ST40BM
lavello sottopiano tondo
bianco opaco
undercounter round basin
white matt

41 x 42 x 19 cm
16^{1/8}" x 16^{1/2}" x 7^{1/2}"



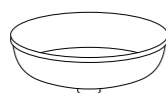
ST40BG
lavello sottopiano tondo
bianco lucido
undercounter round basin
white gloss

41 x 42 x 19 cm
16^{1/8}" x 16^{1/2}" x 7^{1/2}"



SO52BM
lavello sottopiano ovale
bianco opaco
undercounter oval basin
white matt

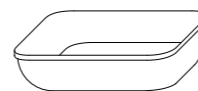
52 x 45 x 19 cm
20^{1/2}" x 17^{3/4}" x 7^{1/2}"



SO52BG
lavello sottopiano ovale
bianco lucido
undercounter oval basin
white gloss

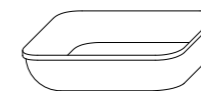
52 x 45 x 19 cm
20^{1/2}" x 17^{3/4}" x 7^{1/2}"

Lavabi disponibile Bianco Opaco, Bianco Lucido
/ Basin available in White Matt, White Gloss



SR53BM
lavello sottopiano rettangolare
bianco opaco
undercounter rectangular basin
white matt

53 x 42 x 18 cm
20^{7/8}" x 16^{1/2}" x 7^{1/8}"



SR53BG
lavello sottopiano rettangolare
bianco lucido
undercounter rectangular basin
white gloss

53 x 42 x 18 cm
20^{7/8}" x 16^{1/2}" x 7^{1/8}"



PILBMC
piletta click clack cromo
bianco opaco
chrome click clack basin plug
white matt



PILBGC
piletta click clack cromo
bianco lucido
chrome click clack basin plug
white gloss



PILBMN
piletta click clack nero
bianco opaco
black click clack basin plug
white matt



PILBGN
piletta click clack nero
bianco lucido
black click clack basin plug
white gloss

cilindro lavabi



CT50BM
ciotola 50
bianco opaco
round bowl
white matt

Ø50 x 18 cm
19^{3/4}" x 7^{1/8}"



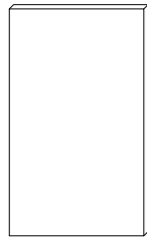
CT50BG
ciotola 50
bianco lucido
round bowl
white gloss

Ø50 x 18 cm
19^{3/4}" x 7^{1/8}"

Lavabi disponibile Bianco Opaco, Bianco Lucido
/ Basin available in White Matt, White Gloss

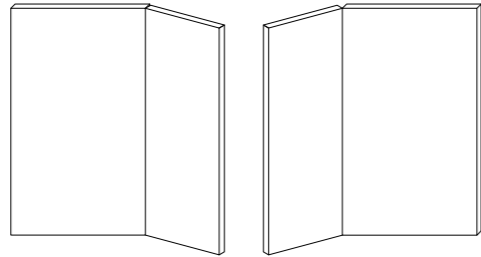


plico specchio



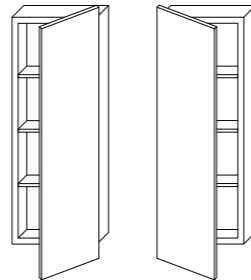
PL75
PLICO 75
specchio
mirror

45 x 75 cm
17^{3/4} x 29^{1/2}"



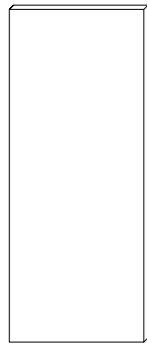
PLAL75
PLICO ALA 75
specchio
mirror

71 x 75 cm
28' x 29^{1/2}"



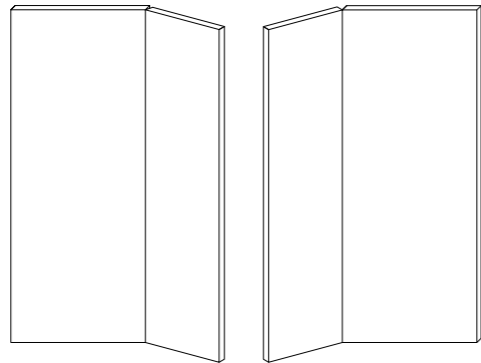
PLBO83
PLICO BOX 83
specchio contenitore
box mirror

32 x 13 x 83 cm
12^{5/8} x 5^{1/8} x 32^{5/8}"



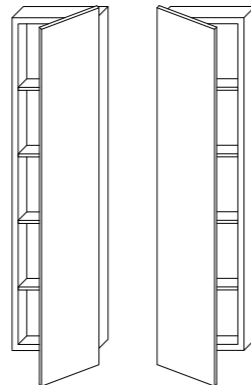
PL110
PLICO 110
specchio
mirror

45 x 110 cm
17^{3/4} x 43^{1/4}"



PLAL110
PLICO ALA 110
specchio
mirror

71 x 110 cm
28' x 43^{1/4}"



PLBO118
PLICO BOX 118
specchio contenitore
box mirror

32 x 13 x 118 cm
12^{5/8} x 5^{1/8} x 46^{1/2}"

TECHNICAL SPECIFICATIONS PORCELAIN STONEWARE

TECHNISCHE EIGENSCHAFTEN FEINSTEINZEUG / CARACTÉRISTIQUES TECHNIQUES GRES CERAME
CARACTERÍSTICAS TÉCNICAS GRES PORCELÁNICO / ТЕХНИЧЕСКИЕ ХАРАКТЕРИСТИКИ КЕРАМОГРАНИТ

CONFORME A NORME / CONFORMING TO STANDARDS / GEMÄSS DEN NORMEN / CONFORMES AUX NORMES / CONFORME CON LAS NORMAS / COOTBETBYET HOPMATIBAM COOTBETBYET HOPMATIBAM
EN 14411 ISO 13006 APPENDICE G GRUPPO B1a UGL CON Ev ≤ 0,5%

CARATTERISTICA TECNICA PHYSICAL PROPERTIES TECHNISCHE DATEN CARACTÉRISTIQUE TECHNIQUE CARACTERÍSTICAS TÉCNICAS ТЕХНИЧЕСКАЯ ХАРАКТЕРИСТИКА	METODICA DI PROVA TESTING METHOD PRÜFVERFAHREN NORME D'ESSAIS METODOLOGIA DE PRUEBAS МЕТОДЫ ИСПЫТАНИЙ	RIFERIMENTO NORMA REFERENCE STANDARD REFERÉNCIA NORME STANDARDWERT REFERENCIA NORMA ССЫЛКА НА НОРМУ	VALORE PRODOTTO PRODUCT VALUES PRODUKT WERTE VALEUR PRODUIT VALOR PRODUCTO ПОКАЗАТЕЛИ ПРОДУКЦИИ
			7cm ≤ N < 15 cm N ≥ 15 cm (mm) (%) (mm)
		Lunghezza e larghezza - Length and width - Länge und Breite Longueur et largeur - Longitud y anchura - Длина и ширина	±0.9 ±0.6 ±2.0
		Spessore - Thickness - Stärke - Epaisseur - Espesor - Толщина	±0.5 ±5.0 ±0.5
		Rettilinearità spigoli - Linearity - Kantengeradheit Rectitude des arêtes - Rectilineidad de los cantos max Прямолинейность углов	±0.75 ±0.5 ±1.5
		Ortogonalità - Wedging - Rechtwinkligkeit Orthogonalité - Ortogonalidad - Ортогональность	±0.75 ±0.5 ±2.0
		Planarità - Warpage - Ebenflächigkeit - Planéité Planitud - Плоскостность	±0.75 ±0.5 ±2.0
		Aspetto: percentuale di piastrelle accettabili nel lotto - appearance: percentage of acceptable tiles, per lot Oberflächenbeschaffenheit: prozentsatz der fliesen, die den geforderten eigenschaften entsprechen - aspect: pourcentage de carreaux acceptables sur la fourmiture totale - aspecto: porcentaje de azulejos aceptables en el lote - внешний вид: процент приемлемой плитки в лоте	95 % min. 95 % min.
			Conforme - Conforming Erfüllt - Conforme - Conforming Соответствующий
			Conforme - Conforming Erfüllt - Conforme - Conforming Соответствующий
			Conforme - Conforming Erfüllt - Conforme - Conforming Соответствующий
			Medio - Average - Mittelwert Moyenne - Media - Средний < 150 mm ³
			6,8 MK-1
			* Resistente - Resistant - Widerstandsfähig - Résistants Resistentes - Устойчивый
			* Resistente - Resistant - Widerstandsfähig - Résistants Resistentes - Устойчивый
			* Resistente - Resistant - Widerstandsfähig - Résistants Resistentes - Устойчивый
			* Resistente - Resistant - Widerstandsfähig - Résistants Resistentes - Устойчивый
			* Resistente - Resistant - Widerstandsfähig - Résistants Resistentes - Устойчивый
			UB min.
			* Resistente - Resistant - Widerstandsfähig - Résistants Resistentes - Устойчивый
			Valore disponibile a richiesta Value available upon request Wert auf Anfrage verfügbar Valeur disponible sur demande Valor disponible opcional Устойчивость к скольжению
			Valore disponibile a richiesta Value available upon request Wert auf Anfrage verfügbar Valeur disponible sur demande Valor disponible opcional Устойчивость к скольжению
			> 0,40 Dry / > 0,40 Wet ≥ 0,42 Wet

* Si raccomanda di consultare Project Department per le indicazioni necessarie al corretto utilizzo.
It's advisable to refer Project Department for all necessary guidelines to a correct use.
Zur korrekten Anwendung wird empfohlen unsere Project Department zu kontaktieren.
Merri de consulter notre Project Department pour les indications a un usage correct.
Se aconseja contactar nuestro Project Department para las instrucciones necesarias para una correcta utilización.
Рекомендуется связаться с Project Department для указаний по правильному применению.



WEBSITE



WE ARE A B CORP

Italgraniti Group ha ottenuto la certificazione B Corp. Il Gruppo persegue da tempo strategie che coniugano innovazione e sostenibilità, mirando a incrementare le ricadute positive sulle persone, sul territorio e sull'ambiente agendo in modo responsabile, sostenibile e trasparente. Italgraniti Group prende parte al movimento globale che vede nell'impresa una forza positiva non solo per l'economia ma anche per il benessere delle persone e del pianeta, e che promuove la transizione verso un modello economico inclusivo, equo e rigenerativo.

Italgraniti Group obtained B Corp certification. The Group has long pursued strategies that combine innovation and sustainability, aiming to increase the positive impact on people, the territory and the environment by acting responsibly, sustainably and transparently. Italgraniti Group takes part in the global movement that sees business as a positive force not only for the economy but also for the well-being of people and the planet, and promotes the transition to an inclusive, fair and regenerative economic model.



ENVIRONMENTAL MANAGEMENT - ISO 14001 - EMAS

Italgraniti Group opera in conformità alle normative ambientali previste dalla certificazione ISO 14001 e del regolamento EMAS, ottenuta da oltre 10 anni. La certificazione europea EMAS (Eco-Management and Audit Scheme) misura e controlla il ridotto impatto sull'ambiente dei siti produttivi, attraverso un sistema di gestione ambientale basato su rigorosi parametri.

Italgraniti Group conforms with the environmental regulations envisaged by the ISO 14001 certification and by the EMAS certification, obtained more than 10 years ago. The European EMAS (Eco-Management and Audit Scheme) certification measures and controls the reduced environmental impact of production sites, through an environmental management system based on strict parameters.

ITALGRANITI GROUP CONTRIBUISCE ALL'EFFICIENZA ENERGETICA ATTRAVERSO:

- 100% di riciclaggio delle acque utilizzate
- 100% riciclo degli scarti crudi e cotti
- 100% riciclo del packaging e dei pallet

ITALGRANITI GROUP CONTRIBUTES TOWARDS ENERGY EFFICIENCY THROUGH:

- 100% recycling of waters used
- 100% recycling of unfired and fired waste
- 100% recycling of packaging and pallets



ECOVADIS

Italgraniti Group ha ottenuto il riconoscimento della Medaglia Silver EcoVadis, una delle più importanti piattaforme internazionali di rating della eco-sostenibilità. EcoVadis mira a migliorare le pratiche ambientali e sociali delle aziende sfruttando l'influenza delle catene logistiche globali. È una delle più importanti piattaforme internazionali di rating dell'eco-sostenibilità e gestisce la prima piattaforma collaborativa che permette alle aziende di monitorare la performance di sostenibilità dei loro fornitori, in 150 settori e in 110 Paesi.

Italgraniti Group was awarded the Silver EcoVadis Medal, one of the most important international eco-sustainability rating platforms. EcoVadis aims to improve environmental and social practices of companies by harnessing the influence of global logistics chains. It is one of the leading international eco-sustainability rating platforms and operates the first collaborative platform that allows companies to monitor the sustainability performance of their suppliers, in 150 sectors and in 110 countries.



100% WATER CONSUMPTION SAVINGS



100% RECYCLING OF UNFIRED WASTE



100% RECYCLING OF FIRED WASTE



100% RECYCLED PACKAGING



100% RECYCLED PALLETS



EPD

L'EPD (Environmental Product Declaration, dichiarazione ambientale di prodotto) è un documento sintetico che traccia il profilo delle prestazioni ambientali del nostro prodotto e che permette di comunicare informazioni oggettive, confrontabili e credibili al riguardo, senza esprimere criteri di valutazione, preferibilità o livelli minimi da rispettare; permette così, a chi lo consulta, di compiere una scelta consapevole e correttamente informata. Quest'anno ITALGRANITI GROUP ha pubblicato il documento con i dati delle proprie attività su www.environdec.com, sito dell'International EPD System, il primo e più longevo programma EPD al mondo.

The EPD (Environmental Product Declaration) is a concise document that outlines the environmental performance profile of our product and allows us to communicate objective, comparable and credible information in this regard, without expressing evaluation, preferability or minimum levels to be respected; it thus allows those who read it to make a conscious and correctly informed choice. This year ITALGRANITI GROUP published its activity data on www.environdec.com, the website of the International EPD System, the world's first and longest running EPD program.



GENDER EQUALITY - UNI/PDR 125:2022

Italgraniti Group è la prima azienda ceramica in Italia ad aver ottenuto la Certificazione di Genere secondo lo standard UNI/PDR 125:2022. La parità di genere è un elemento fondamentale per combattere le discriminazioni nel mondo del lavoro e per realizzare i propri obiettivi strategici. Il rispetto della persona, congiuntamente con il suo sviluppo professionale, sono considerati valori imprescindibili per il Gruppo, il quale reputa le capacità relazionali, intellettive, organizzative e tecniche di ogni dipendente una risorsa fondamentale per l'organizzazione.

Italgraniti is the first ceramic company in Italy to have obtained the Gender Equality Certification according to the UNI/PDR 125:2022 standard. Gender equality is a key element in fighting discriminations in the workplace and in achieving strategic goals. Respect for the people, along with their professional growth, are considered unavoidable values by the Group, which considers employees' relational, intellectual, organizational, technical capabilities as an essential resource for the company.



QUALITY SYSTEM MANAGEMENT - ISO 9001

La certificazione UNI ISO 9001 2015 è riconosciuta a livello internazionale e rappresenta una garanzia di eccellenza e qualità del proprio sistema di gestione. ITALGRANITI GROUP ha deciso di intraprendere spontaneamente questo importante percorso adottando un insieme di regole, responsabilità e controlli per migliorare l'efficienza dei processi e la soddisfazione del cliente, accrescere la propria competitività e mantenere la conformità ai più alti standard qualitativi.

UNI ISO 9001 2015 certification is internationally recognised and represents a guarantee of the excellence and quality of the management system. ITALGRANITI GROUP decided of its own accord to undertake this important process, adopting a set of rules, responsibilities and checks to improve the efficiency of processes and customer satisfaction, to boost its competitiveness and maintain compliance with the highest quality standards.



CARBON MANAGEMENT - ISO 14064-1

La certificazione ISO 14064-1 permette alle organizzazioni di quantificare le proprie emissioni di GHG al fine di attuare delle politiche di Carbon Management e comunicare il proprio impegno in tema di sostenibilità ai propri stakeholder. Italgraniti Group ha intrapreso un percorso di rendicontazione delle proprie emissioni e rimozioni di gas ad effetto serra (GHGs). Lo studio intende rispondere ad una esigenza orientata, non solo alla conoscenza della propria Impronta di Carbonio ma anche all'individuazione di possibili strategie e azioni volte a ridurre le emissioni di GHG. Questa importante certificazione testimonia l'approccio pro-attivo del Gruppo e la capacità di fornire dati coerenti ed affidabili sulla propria Carbon Footprint.

ISO 14064-1 certification allows organisations to quantify their GHG emissions to implement carbon management policies and communicate their sustainability commitment to their stakeholders. Italgraniti Group started a reporting path on their greenhouse gases (GHG) emissions and removal. The study intends to respond to a need geared not only towards knowing their own Carbon Footprint but also towards identifying possible strategies and actions aimed to reducing GHG emissions. This important certification proves the Group proactive approach and the ability to provide consistent and reliable data on their Carbon Footprint.



SAFETY SYSTEM MANAGEMENT - ISO 45001

La salute e il benessere dei lavoratori sono interessi primari per ITALGRANITI GROUP. L'ottenimento della certificazione UNI ISO 45001 rafforza una cultura d'impresa che vede la sicurezza non solo come a un adempimento normativo, ma come parte essenziale dei processi lavorativi. La normativa è uno strumento necessario per generare un nuovo modello di competitività sostenibile che possa migliorare la crescita di tutte le performance aziendali.

The health and wellbeing of employees are crucial priorities for ITALGRANITI GROUP. The attainment of UNI ISO 45001 certification strengthens a business culture that sees safety not simply as a question of regulatory compliance, but as an essential part of working processes. Regulation is a necessary tool for generating a new model of sustainable competitiveness that can improve company performance across the board.



LOW ATMOSPHERIC GAS EMISSIONS



WEBSITE



HPD

Italgraniti Group ha adottato lo standard collaborativo HPD Dichiarazioni di Salubrità di Prodotto (Health Product Declarations), per comunicare in modo trasparente il contenuto dei propri materiali e il relativo impatto sulla salute. Grazie all'HPD, i nostri prodotti contribuiscono all'ottenimento di crediti LEED® e WELL™.

Italgraniti Group has adopted the HPD (Health Product Declarations) collaborative standard to communicate the contents of its materials and the related impact on health in a transparent manner. Thanks to HPD, our products contribute towards obtaining LEED® and WELL™ credits.



LEED CERTIFICATION

I prodotti di ITALGRANITI GROUP rispondono ai requisiti richiesti dalle certificazioni LEED. I crediti LEED forniscono a tutte le parti interessate gli strumenti necessari per calcolare in modo oggettivo l'impatto di uno stabile in termini di sostenibilità ambientale. Il sistema si basa sull'attribuzione, per ciascuno dei requisiti caratterizzanti l'eco-compatibilità di un edificio, di crediti che, sommati tra loro, danno il livello di certificazione ottenuto: più alto è, più cresce il valore competitivo dell'immobile sul mercato.

I nostri prodotti non rilasciano sostanze tossiche e non contribuiscono all'effetto isola di calore; inoltre, escono da uno stabilimento dotato di sistema di gestione ambientale certificato. Per realizzarli viene utilizzata una percentuale certificata di materiale riciclato superiore al 20% (materiale pre-consumo). Questa certificazione è stata rilasciata da Bureau Veritas Italia S.p.A.

ITALGRANITI GROUP's products meet the requirements of LEED certifications. LEED credits provide all interested parties with the necessary tools to objectively calculate the impact of a building in terms of environmental sustainability. The system is based on the attribution - for each of the requirements characterising the eco-compatibility of a building - of credits that, added together, give the level of certification obtained: the higher it is, the greater the competitive value of the building on the market.

Our products do not release toxic substances and do not contribute to the heat island effect; moreover, they come from a plant with a certified environmental management system. A certified percentage of more than 20% recycled material (pre-consumer material) is used to manufacture them. This certification was issued by Bureau Veritas Italia S.p.A.



Italgraniti Group è membro del Green Building Council Italia, organizzazione che promuove la cultura e la pratica dell'edilizia sostenibile in un contesto che rispetti le esigenze dell'uomo, della collettività e dell'ambiente.

Italgraniti Group is a member of the Green Building Council Italia, an organisation that promotes the culture and practice of sustainable construction in a context that respects the needs of mankind, of the collective whole and of the environment.

BREEAM®

BREEAM® (Building Research Establishment Environmental Assessment Method), sviluppato nel 1990 dal BRE Global, è uno dei principali sistemi al mondo utilizzato per misurare le prestazioni ambientali e di sostenibilità degli edifici nuovi ed esistenti. La valutazione BREEAM® utilizza una gamma di indicatori e criteri di sostenibilità per valutare le prestazioni dell'edificio coprendo diverse tematiche ambientali: energy e risorse idriche, salute e benessere, inquinamento, trasporti, materiali, rifiuti, ecologia e processi di gestione. Tutte le collezioni Italgraniti contribuiscono al raggiungimento dei crediti BREEAM®.

BREEAM® (Building Research Establishment Environmental Assessment Method), which was developed in 1990 by BRE Global, is one of the main systems in the world used to measure the environmental and sustainability performance of new and existing buildings. The BREEAM® assessment uses a range of indicators and sustainability criteria to assess the performance levels of a building, covering several environmental topics: energy and water resources, health and wellbeing, pollution, transport, materials, waste, environmental awareness and management processes. All Italgraniti collections contribute towards obtaining BREEAM® credits.

WELL™

WELL™ Building Standard (WELL™) è il primo sistema di rating per l'edilizia sostenibile che consente di misurare, certificare e monitorare le caratteristiche dell'edificio che hanno un impatto sulla salute e sul benessere degli occupanti. Il WELL™ fornisce un percorso per integrare e misurare i temi della salute umana e del benessere nella progettazione, costruzione e gestione di edifici. Per ottenere la certificazione WELL™ Building Standard™, l'edificio deve essere sottoposto a un processo che comprende una valutazione in loco e una verifica delle prestazioni da parte di un certificatore abilitato. Tutte le collezioni Italgraniti contribuiscono al raggiungimento dei crediti WELL™.

WELL™ Building Standard (WELL™) is the number one rating system for sustainable construction designed to measure, certify and monitor the features of the building, which have an impact on the health and wellbeing of its occupants. WELL™ provides a path to integrate and measure topics of human health and wellbeing in the design, construction and management of buildings. To obtain the WELL™ Building Standard™ certification, the building must undergo a process which includes an on-site assessment and an inspection of performance levels by a qualified certifier. All Italgraniti collections contribute towards obtaining WELL™ credits.

CAM ISO 14021

I Criteri Ambientali Minimi (CAM) sono i requisiti ambientali ed ecologici definiti dal Ministero dell'Ambiente. Con decreto 23 giugno 2022 il Ministero della Transizione Ecologica ha disposto la loro revisione (Criteri ambientali minimi per l'affidamento del servizio di progettazione ed esecuzione dei lavori di interventi edilizi). I CAM mirano a facilitare l'inserimento di requisiti di eco-sostenibilità nelle gare d'appalto per interventi pubblici. L'obiettivo è quello di stimolare acquisti che minimizzino l'uso di risorse naturali e il consumo di energia, che contribuiscano inoltre alla diffusione di fonti rinnovabili, riducano la produzione di rifiuti, le emissioni inquinanti nell'aria, nell'acqua e nel suolo ed che eliminino le sostanze ambientalmente pericolose. Grazie ad un sistema di gestione ambientale sostenibile, alla certificazione EPD e in accordo con lo standard internazionale ISO 14021, Italgraniti contribuisce ad un'edilizia di qualità e prestazioni al di sopra della media di settore.

The Minimum Environmental Criteria (CAM) are the environmental and ecological requirements defined by the Italian Ministry of the Environment. By decree of 23 June 2022, the Ministry of Ecological Transition ordered their revision (Minimum Environmental Criteria for the awarding of design and execution services for building works). CAM aims to facilitate the inclusion of eco-sustainability requirements in tenders for public operations. The aim is to stimulate purchases that minimise the use of natural resources and energy consumption levels, which also contribute towards the spread of renewable sources, reducing waste production, polluting emissions into the air, water and soil, and which eradicate environmentally hazardous substances. Thanks to a sustainable environmental management system, to the EPD certification and in accordance with international standard ISO 14021, Italgraniti contributes towards quality construction with performance levels above the industry average.



ONGREENING

Ongreening.com fornisce informazioni dettagliate sulla conformità e il contributo dei prodotti Italgraniti Group ai principali sistemi di certificazione della sostenibilità degli edifici (LEED®, BREEAM®, WELL™, CAM ed altri).

Ongreening.com provides detailed information about the conformity and contribution of Italgraniti Group products to the main building sustainability certification systems (LEED®, BREEAM®, WELL™, CAM and others).



FOR MORE
INFO VISIT
ONGREENING.COM



Il prestigioso marchio d'origine Ceramics of Italy contrassegna solamente i prodotti realizzati in Italia, che rappresentano i valori appartenenti all'industria ceramica da decenni.

ITALGRANITI GROUP sostiene il codice etico di Confindustria Ceramica che, dalla produzione 100% Made in Italy alla responsabilità sociale e ambientale, promuove una politica industriale seria e trasparente.

Ceramics of Italy is the certified brand of origin which exclusively marks all products fully manufactured in Italy representing the decades old values system of the Italian Ceramic Industry.

We support all those values promoted by the Confindustria Ceramica code of ethics, from 100% Italian production to social and environmental responsibility.



Portiamo con orgoglio in tutto il mondo materiali che esprimono al meglio la cultura estetica, l'eccellenza stilistica e tecnica del Made in Italy.

Sul mercato internazionale, il nostro nome è sinonimo di grès porcellanato dalle altissime prestazioni tecniche ed estetiche e attraverso la trasformazione di materie prime di assoluta qualità otteniamo progetti ceramici capaci d'interpretare le molteplici esigenze di un mondo in costante evoluzione.

Around the world, we proudly promote materials that best express that Made in Italy aesthetic, style and technical excellence.

On the international market, our name is synonymous with porcelain stoneware that offers extremely high technical and aesthetic performance. We transform top quality raw materials into ceramic projects able to interpret the many requirements of a continuously evolving world.

ART DIRECTION

Andrea Parisio, Giuseppe Pezzano

GRAPHIC DESIGN

VZNstudio
Nicola Iannibello, Sonia Mion

RENDER

suprema unlimited reality

STYLING

Alessandra Vigani

TEXT

Paolo Bottiroli

Cessione Gratuita - Materiale non destinato alla vendita Cod. JCATLOOM

**Italgraniti Group S.p.A.**

Via Radici in Piano 355
41043 Formigine - Modena - Italy
Tel +39 059 888411
Fax +39 059 848808
www.italgranitigroup.com
info@italgranitigroup.com
project.department@italgranitigroup.com

Flagship Store

Via Statuto 21
20121 - Milano - Italy
Tel +39 02 84567687
milano@italgranitigroup.com

 **ITALGRANITI**
SUPERIOR ITALIAN SURFACES



